



01270 685658

[admin@goostrey.cheshire.sch.uk](mailto:admin@goostrey.cheshire.sch.uk)

[www.goostrey.cheshire.sch.uk](http://www.goostrey.cheshire.sch.uk)

@goostreyprimary



Newsletter 5th March 2021

Dear Families,

**We're all back on Monday and we're ready—all we need now are the pupils. Have a lovely weekend and see you in three days.**

Updated guidance on how the school will operate was emailed out to all families earlier this week.

**A couple of reminders—please do not arrive too early for drop off or pick up and once your child has gone in to school or you have picked them up we are asking you to then leave the school premises quickly. This will minimise the number of people gathered in one place. Masks still need to be worn on school premises thank you.**

**Please see this excellent link to access Digital Parenting magazine, which contains tips and advice for keeping pupils safe online:**

<https://www.flipsnack.com/FA7569CC5A8/digital-parenting-by-vodafone-2021-edition/full-view.html>

**Please keep sending your child's achievements for the newsletter so we can celebrate them together. I love reading about everything the pupils are doing both in and out of school.**

**The school's official communication with families comes through the newsletter, website, class pages, messages through the app, email and occasionally paper letters. We do not have an official Facebook account for information.**

*Please keep checking class pages on the website for specific information / dates for each class. Many events / activities eg class visits, extra curricular and sporting events will have separate information sent out detailing dates and times etc.*

*Holiday dates are on the school website— 20 21 and 21 22*

*Miss Atkins—a head teacher who is very proud of Goostrey School and everyone associated with it.*

### Useful information

**Before and after school clubs :** booking forms available on school website

[http://www.goostrey.cheshire.sch.uk/serve\\_file/48433](http://www.goostrey.cheshire.sch.uk/serve_file/48433)

**School uniform:** [www.myschoolstyle.com/school/goostrey](http://www.myschoolstyle.com/school/goostrey)

On-line payment website address [www.cheshireeast.gov.uk/schoolshop](http://www.cheshireeast.gov.uk/schoolshop)

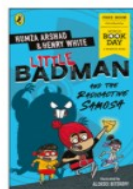
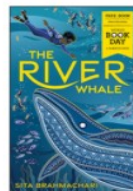
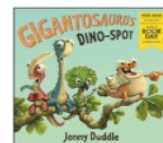
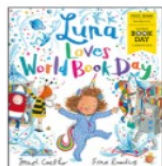
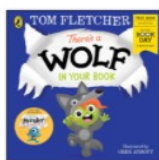
SENCo [mrs.freeman@goostrey.cheshire.sch.uk](mailto:mrs.freeman@goostrey.cheshire.sch.uk)

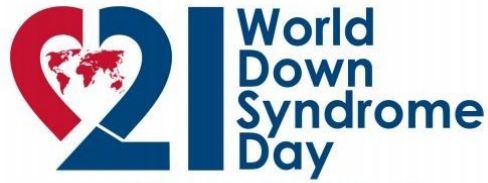
We hope you enjoyed

World Book Day 2021

The pupils will be issued with their £1 Book tokens on Monday. These can be exchanged for a special £1 books (below) produced for WBD or towards the cost of another title. There will be e-vouchers available too.

Thank You





[www.worlddownsyndromeday.org](http://www.worlddownsyndromeday.org)

Every year World Down Syndrome Day\* is celebrated on 21 March (Sunday). World Down Syndrome Day is a global awareness event...and we need you to help spread the word in **your** part of the world. The day was created to celebrate the lives of people with Down Syndrome and to make sure people with Down Syndrome have the same freedoms and opportunities as everybody else.

### **How can you help? By wearing #LotsOfSocks!**

But not just any socks...

...wear our official #LotsOfSocks socks or other brightly coloured, mis-matched socks.

Wear them at home, nursery, school, college, university, work, play, travel, on holiday...wherever you are and whatever you're doing on 21 March!

Make sure to take pictures and videos and post them on Facebook, Twitter and Instagram using the hashtags #LotsOfSocks,

#WorldDownSyndromeDay and #WDSD20...we love seeing and sharing everyone's #LotsOfSocks pictures!

**Please wear your odd socks to school on Friday 19<sup>th</sup> March to support this important event. You can also wear your odd socks on Sunday 21<sup>st</sup> March at home!**

## Testing

**Community Collect:** On Sunday 28 February, the [Department of Health and Social Care announced](#) that from Monday 1 March, households with primary school, secondary school and college age children and staff, including childcare and support bubbles, can test themselves twice every week at home as schools return from Monday 8 March. Twice-weekly testing will also be offered to adults working in the wider school community, including bus drivers and after school club leaders. The twice-weekly test kits can be accessed:

- via employers if they offer testing to employees
- at a local test site
  - by collecting a home test kit from a test site
  - by ordering a home test kit online

The attached guidance explains how to get access to the kits and gives details of the nearest collection points.

### Home Testing for Family and Childcare bubbles

At present the kits can be collected from the sites below **during the stated hours only**. Further collection points will be available soon.

Town	Venue	Times
Macclesfield	COVID-19 Test Centre SITE: LTS612 Macclesfield Commercial Road Car Park SK10 2QJ	<b>1.30pm – 7pm Monday- Sunday</b>
Crewe	Local Test site 121 Crewe Chester Street car park CW1 2ER	<b>1.30pm – 7pm Monday- Sunday</b>

**Children of primary school age (and below) without symptoms are not being asked to take a test.**

If tests are done at home, they **should not** be recorded as Test site results as they have not been subject to the same quality control and training of staff.

We realise that the situation is changing regularly and if we are provided with further information, we will update you.

Undertaking regular, rapid coronavirus (COVID-19) testing helps reduce transmission of the virus. Parents and other adults in households with children at school or college, who do not have symptoms, can now access regular, rapid coronavirus (COVID-19) testing. This includes childcare and support bubbles.

Tests are fast, easy and completely free. There are [different ways](#) for a household, childcare or support bubble to collect their test to take at home, twice-weekly:

If you have any queries about the tests, and you live in England, please call 119 (free from mobiles and landlines). Lines are open every day from 7am to 11pm.

Testing is voluntary, but strongly recommended to all who are eligible. Alongside the vaccine, washing hands, wearing face coverings, and maintaining social distancing, rapid testing plays a vital role in reducing transmission rates. Getting into the habit of regular testing as part of our everyday lives will help us all to play our part and do what we can to protect each other.

## Contact Tracing

As children return to school it is likely that we will see more instances of positive cases and the need for schools to complete contact tracing. As a reminder the definition of a close contact is:

A contact is defined as a person who has had contact (see below) at any time from **two days** before onset of symptoms (or time of test if asymptomatic) to 10 days after onset of symptoms (or test):

a person who has had face-to-face contact (within one metre) with someone who has tested positive for coronavirus (COVID-19), including:

being coughed on, or

having a face-to-face conversation, or

having skin-to-skin physical contact, or

any contact within one metre for one minute or longer without face-to-face contact

a person who has been within 2 metres of someone who has tested positive for coronavirus (COVID-19) for more than 15 minutes

a person who has travelled in a small vehicle *with* someone who has tested positive for coronavirus (COVID-19) or in a large vehicle *near* someone who has tested positive for coronavirus (COVID-19)

people who spend significant time in the same household as a person who has tested positive for coronavirus (COVID-19)

**You will notice that the infectious period has been updated to 2 full days before the onset of symptoms or test.**

**If you have something that you would like putting in our newsletter please email it either to *head@goostrey.cheshire.sch.uk* or *admin@goostrey.cheshire.sch.uk***

**It needs to be with us by 12.00 on Thursday and attached to your email on a WORD document so once approved we can easily cut and paste. Thank you**

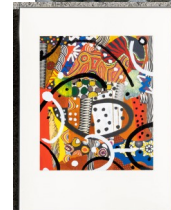
**We always welcome pieces about Goostrey pupils and their achievements outside of school. I love to hear what our pupils are celebrating and achieving outside school so we can celebrate in the newsletter and assembly.**

**The responsibility to get permission for other people's children to be on photographs lies with the sender not with the school.**

**We will usually allow local events to be advertised in the newsletter, especially if we think they will be of interest to our pupils and their families.  
However we do not endorse or take responsibility for anything not directly organised by the school.**

# Calling All Budding Goostrey Artists

## Would you like to get involved in a competition?



The Young Artists' Summer Show is a free, open submission exhibition for young artists aged 5 - 19 years studying in the UK and British schools overseas.

We have registered Goostrey School for this competition.

Next, students, their parents/guardians or their teachers can submit artworks. These artworks are then judged by a panel of artists and arts professionals with selected artworks displayed online and on-site at the Royal Academy of Arts.

What kind of artworks do they accept?

The artwork can be made using any medium (a word for the materials you've used to create your piece). It can be a painting, sculpture, photograph, installation, video, drawing, or a combination. There is no theme so artworks can be of any subject and we don't mind when you made the artwork as long as you are between 5-19 when you submit it. We also welcome collaborative pieces.

- Key dates for 2021
- Submission closes 26 April 2021
- Judging May 2021
- Online and onsite exhibitions open 11 July 2021

## How can I enter?

Submitting artwork is completely free and is done online. Once the school is registered, which we are, your artworks can be submitted. If you're 12 or under, a teacher or parent/guardian will need to enter for you.

Each student can submit up to three artworks of any type and there is no theme. When you enter, we'll ask for images of your artwork plus some information about the piece such as title, size, and a little text about the artwork and why you made it. Your artwork will be seen by our panel of judges and the selected pieces will be shown in our online exhibition. Some of the artworks will also be shown at the Royal Academy of Arts.

[Young Artists' Summer Show | Royal Academy](#)

Hello, please join us during the weekend of 5th March to raise some much needed funds for the PTA. There's a variety of ways you can support the event from buying raffle tickets, coming along to the zoom PT class to treating yourself to some Tropic goodies! There will also be daily giveaways, simply join the Facebook page.....

<https://m.facebook.com/groups/goostreypta fundraiser/?tsid=0.4500820425612291&source=result>

# Let's Get Glowing For Mother's Day In Association with Goostrey Primary School PTA

Join us from

**Friday 5<sup>th</sup> - Sunday 7<sup>th</sup> March  
At our Facebook group**

<https://www.facebook.com/groups/goostreypta fundraiser>

**Come and find out which Tropic products will get your glow on as well as discovering some of the amazing gift sets and ideas we have to brighten up Mother's Day.**

**We will also be joined by Claire Withe on Saturday morning at 11am to help us all get our full body glow on, with a 45 minute fitness session, for a small donation of £5.**

**They'll be lots of exciting things to join in with each day and we'll also be taking donations for the PTA to hopefully help cover some of the funds that have been lost with out being able to hold our usual events. Every £1 that is donated = 1 entry into a prize draw**

**For every order that is placed over the event we will also be donating 10% of the sales to the PTA**

**Remember to share the group link with friends and family.**

**We look forward to seeing you all on-line**

**For more information or help with joining the Facebook group please contact**

**Emma Shanahan 07837 548259**

**Melissa Bairstow 07519 658488**





**Before entering any part of the school building please read the questions below:**

**In the last 14 days have you or any member of your household tested positive for Covid-19?**

**In the last 14 days have you or any member of your household displayed symptoms of Covid-19?**

**High temperature**

**New continuous cough**

**Loss of, or change to, your sense of taste/smell**





**Have you been identified by test and trace, or any other official source, as a 'close contact' of someone who has tested positive for Covid-19, within the last 14 days?**

**If you have answered yes to any of the above, please DO NOT enter the school building.**

**Thank You.**

# COVID-19 (coronavirus) absence: A quick guide for parents / carers



What to do if...	Action needed	Back to school...
 <p><b>...my child has COVID-19 (coronavirus) symptoms*</b></p>	<ul style="list-style-type: none"> <li>• Child shouldn't attend school</li> <li>• Child should get a test</li> <li>• Whole household self-isolates while waiting for test result</li> <li>• Inform school immediately about test results</li> </ul>	<p><b>...when child's test comes back negative</b></p>
 <p><b>...my child tests positive for COVID-19 (coronavirus)</b></p>	<ul style="list-style-type: none"> <li>• Child shouldn't attend school</li> <li>• Child self-isolates for at least 10 days from when symptoms* started (or from day of test if no symptoms)</li> <li>• Inform school immediately about test results</li> <li>• Whole household self-isolates for 14 days from day when symptoms* started (or from day of test if no symptoms) - <i>even if someone tests negative during those 14 days</i></li> </ul>	<p><b>...when child feels better, and has been without a fever for at least 48 hours</b></p> <p>They can return to school after 10 days even if they have a cough or loss of smell / taste. These symptoms can last for several weeks once the infection is gone.</p>
 <p><b>...somebody in my household has COVID-19 (coronavirus) symptoms*</b></p>	<ul style="list-style-type: none"> <li>• Child shouldn't attend school</li> <li>• Household member with symptoms should get a test</li> <li>• Whole household self-isolates while waiting for test result</li> <li>• Inform school immediately about test results</li> </ul>	<p><b>...when household member test is negative, and child does not have COVID-19 symptoms*</b></p>
 <p><b>...somebody in my household has tested positive for COVID-19 (coronavirus)</b></p>	<ul style="list-style-type: none"> <li>• Child shouldn't attend school</li> <li>• Whole household self-isolates for 14 days from day when symptoms* started (or from day of test if no symptoms) - <i>even if someone tests negative during those 14 days</i></li> </ul>	<p><b>...when child has completed 14 days of self-isolation, even if they test negative during the 14 days</b></p>

\* Symptoms include at least one of a high temperature; a new continuous cough; a loss of or change to your sense of smell or taste. See more at: <https://www.nhs.uk/conditions/coronavirus-covid-19/symptoms/>

What to do if...	Action needed	Back to school...
<p><b>...NHS Test and Trace has identified my child as a 'close contact' of somebody with symptoms* or confirmed COVID-19 (coronavirus)</b></p>	<p>•Child shouldn't attend school •Child self-isolates for 14 days (as advised by NHS Test and Trace) – even if they test negative during those 14 days •Rest of household does not need to self-isolate, unless they are a 'close contact' too</p>	<p><b>...when the child has completed 14 days of self-isolation, even if they test negative during those 14 days</b></p>
<p><b>...we / my child has travelled and has to self-isolate as part of a period of quarantine</b></p>	<p>•Do not take unauthorised leave in term time •Consider quarantine requirements and FCO advice when booking travel •Provide information to school as per attendance policy</p> <p><b>Returning from a destination where quarantine is needed:</b></p> <p>•Child shouldn't attend school •Whole household self-isolates for 14 days – even if they test negative during those 14 days</p>	<p><b>...when the quarantine period of 14 days has been completed for the child, even if they test negative during those 14 days</b></p>
<p><b>...we have received advice from a medical / official source that my child must resume shielding</b></p>	<p>•Child shouldn't attend school •Contact school as advised by attendance officer / pastoral team •Child should shield until you are informed that restrictions are lifted and shielding is paused again</p>	<p><b>...when school / other agencies inform you that restrictions have been lifted and your child can return to school again</b></p>
<p><b>....I am not sure who should get a test for COVID - 19 (coronavirus)</b></p>	<p>•Only people with symptoms* need to get a test •People without symptoms are not advised to get a test, even if they are a 'close contact' of someone who tests positive</p>	<p><b>...when conditions above, as matching your situation, are met</b></p>



Please click on the link below for full details of our after school provision and electronic copies of our registration and booking forms.

We are open Monday to Friday - 3pm to 6pm.

If you would like to see what the children have been up to this week, please follow us on Facebook or Twitter.

<https://www.goostreyallstars.co.uk/>



## Useful contacts and numbers.....

If there's any other information that you feel should be added to this page, as a weekly standing item, please let me know.

[www.goostreypreschool.org.uk](http://www.goostreypreschool.org.uk)

**Telephone: 07471 756720** - available during pre-school hours only.



Please click on the link below for full details of our after school provision and electronic copies of our registration and booking forms.

We are open Monday to Friday - 3pm to 6pm.

If you would like to see what the children have been up to this week, please follow us on Facebook or Twitter.

<https://www.goostreyallstars.co.uk/>



### Before School Club

If you would like to enrol your child for Goostrey Before School Club, please either download a booking form from our website [www.goostrey.cheshire.sch.uk](http://www.goostrey.cheshire.sch.uk) or collect from the reception desk. The cost is £3.00 per session and the club operates on each school day, from 8.00 AM to 8.55 AM. Please note no food is served at this club.

The Chair of Governors and the Head teacher meet at least once a week. If you have anything you would like them to discuss / consider please let us know. We will always respond to you.

The web address for ordering school uniform is:  
[www.myschoolstyle.com/school/goostrey](http://www.myschoolstyle.com/school/goostrey)

Class pages, on the school website have lots of up to date information for your child's class. Please keep looking at these as they are updated every week for you. Thank you

### Compliments and Comments and Suggestions.

If you wish to give school general feedback about any aspect of school life, please email either Miss Atkins on [head@goostrey.cheshire.sch.uk](mailto:head@goostrey.cheshire.sch.uk) or class teachers, whose email addresses are on each class page on the website; <http://www.goostrey.cheshire.sch.uk/classes>

In current circumstances we are not able to operate our normal open door policy.