



01270 685658

admin@goostrey.cheshire.sch.uk

www.goostrey.cheshire.sch.uk

@goostreyprimary



Newsletter 12th March 2021

Dear Families,

What a happy and settled week it has been in school—we are so pleased and relieved to be back. We have had 100% attendance some days. As soon as the children were in, the learning resumed—they had time to catch up with all their friends and get used to being here once again. It didn't take long for us to be back to normal and working together as Team Goostrey. Thank you to all our families for the hard work you have put in with your child/ren's learning over lockdown. This week we have been reviewing and feeding back on work covered and it is so impressive. Pupils have been enthusiastic and proud of the work completed and have been thinking about their favourite pieces.

SAFEGUARDING REMINDER—IF PUPILS BRING SMART WATCHES AND/OR PHONES IN TO SCHOOL THEY MUST STAY SWITCHED OFF AND IN THEIR BAGS THROUGHOUT THE SCHOOL DAY. Full guidance from our Safeguarding Policy on page 2. Thank you

Link to Digital Parenting magazine below:

<https://www.flipsnack.com/FA7569CC5A8/digital-parenting-by-vodafone-2021-edition/full-view.html>

Miss Atkins—a head teacher who is very proud of Goostrey School and everyone associated with it.

Please keep sending your child's achievements for the newsletter so we can celebrate them together. I love reading about everything the pupils are doing both in and out of school.

The school's official communication with families comes through the newsletter, website, class pages, messages through the app, email and occasionally paper letters. We do not have an official Facebook account for information.

Please keep checking class pages on the website for specific information / dates for each class. Many events / activities eg class visits, extra curricular and sporting events will have separate information sent out detailing dates and times etc.

Holiday dates are on the school website— 20 21 and 21 22

Useful information

Before and after school clubs : booking forms available on school website

http://www.goostrey.cheshire.sch.uk/serve_file/48433

School uniform: www.myschoolstyle.com/school/goostrey

On-line payment website address www.cheshireeast.gov.uk/schoolshop

SENCo mrs.freeman@goostrey.cheshire.sch.uk

Use of mobile phones, cameras and internet:

The possession and use of electronic smart devices (phones, watches and tablets etc) by school students is now extensive. Use of electronic smart devices, particularly with the advent of increasingly sophisticated equipment and internet access presents a number of challenges for the school, including:

- (i) Smart devices can be valuable items and might prove a temptation to other students;
- (ii) Smart devices can make students objects of envy or disparagement and could have implications with regard to discipline and potential bullying;
- (iii) Smart devices, particularly when used for accessing the internet, can distract young children and make them unaware of potential dangers around them, i.e. when walking to school or crossing roads;
- (iv) Even when apparently silent, the use of devices could potentially undermine classroom discipline;
- (v) Use of technology with integrated cameras could lead to child protection and data protection issues with regard to inappropriate capture, use or distribution of images;
- (vi) Smart devices which access the internet are not covered by the school's security and therefore may put students at risk.

Governors believe it to be unrealistic to have a policy that prohibits students from bringing devices to school. As a school, fully committed to exploring the use of new technology in developing students' learning, we believe that it would be imprudent to forbid students from carrying them. We also believe that a number of parents would be concerned, for health & safety reasons, if their child were not allowed to carry a phone at all and might therefore be unable to contact their parents in respect of any situation that might arise.

The correct guidance, when followed, will enable students to:

1. show respect
 2. use technology appropriately & responsibly
 3. learn to manage & minimise any risk
- protect their own safety & the safety of other people

Guidance for the use of technology, by students, at Goostrey Primary School:

1. Our general advice to all parents is to discourage students from bringing smart devices to school, on the grounds that they are valuable and may be lost, damaged or stolen. The school takes no responsibility for, nor will we dedicate any time to, lost/stolen/missing equipment. The school will not accept responsibility for loss or damage. Students, with permission from an adult can use the school phone should they need to contact parents during the day or vice versa. Children do have access to school smart devices as part of the teaching and learning.
2. Where a student does bring a device to school, this must remain switched off and in the student's bag during the school day and may not be used, for any purpose on school premises, grounds or during off-site school activities (such as school swimming, after-school clubs, visits out or residential activities). For exceptions please see exceptions section below.
3. It is the student's responsibility to make sure the device is left in their bag and switched off.
4. Where a student is found to be using a personal smart device for any purpose, during the school day or on a residential visit it will be confiscated and returned *only* to the parent/carer.
5. The school operates this policy in conjunction with the Behaviour Policy and E-Safety Policy and will treat breaches as they would treat any other breach of School rules.

We hope families will understand the need for these guidelines. It is the decision of parents and carers as to whether a child may bring their device into school. If a child brings a device into school, school will not be held accountable for any information accessed.

Exceptions

An event when devices are invited into school.

1. In exceptional circumstances a student may be given permission to use their smart device, by an adult, in school.
2. A Kindle or other e-reader (base model) may be used by students for reading.
3. The adult organising visits out, trips, residentials /sporting fixtures etc. may decide that it is appropriate for electronic smart devices to be used. The adult will tell families if this is the case.



Inspirational Person of the Week— discussed in classes this week

Professor Dame Donna Kinnair DBE is a British nurse and has been Chief Executive and General Secretary of the Royal College of Nursing (RCN) since August 2018

She often arrives at work before 7.30am on the back of her husband's motorbike.

"My daughter says I'm unflappable, but that's not necessarily true.

My first priority is always to look after those around me. So I might behave like things don't affect me because I have to maintain my ability to deal with a situation."

"I think practice makes perfect," she muses. "I also cycle and quite often talk to myself. If there's something bothering me, I have to talk it through. But I'm not shy about seeking help from other people or afraid of having a real conversation about an issue with someone else.

"I also think you learn from situations. So I try to take time to reflect. But I'm by no means perfect. I really have to force myself to listen, as well as talk. And I can get myself in trouble by speaking my mind. That's who I am, I'm not going to be able to change that, but I do try to moderate a little."

As for her biggest strength, perhaps it's her optimism. "I never say never and can always see the good in things. I think that's quite important."

If you have something that you would like putting in our newsletter please email it either to head@goostrey.cheshire.sch.uk or admin@goostrey.cheshire.sch.uk

It needs to be with us by 12.00 on Thursday and attached to your email on a WORD document so once approved we can easily cut and paste. Thank you

We always welcome pieces about Goostrey pupils and their achievements outside of school. I love to hear what our pupils are celebrating and achieving outside school so we can celebrate in the newsletter and assembly.

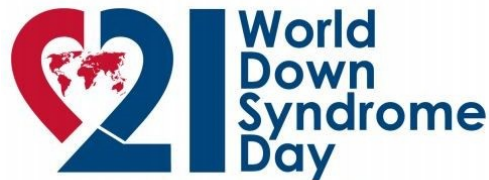
The responsibility to get permission for other people's children to be on photographs lies with the sender not with the school.

We will usually allow local events to be advertised in the newsletter, especially if we think they will be of interest to our pupils and their families. However we do not endorse or take responsibility for anything not directly organised by the school.



A message from Rev Heather at St Luke's

Just to let you know our thoughts and prayers have been with you particularly this week as your children have returned to school; for the mixture of emotions involved. Trust this coming Sunday mothers and carers (fathers too) will feel valued and appreciated. Happy Mothering Sunday!



www.worlddownsyndromeday.org

Every year World Down Syndrome Day* is celebrated on 21st March (Sunday).

World Down Syndrome Day is a global awareness event...and we need you to help spread the word in **your** part of the world. The day was created to celebrate the lives of people with Down Syndrome and to make sure people with Down Syndrome have the same freedoms and opportunities as everybody else.

How can you help? By wearing #LotsOfSocks!

But not just any socks...

...wear our official #LotsOfSocks socks or other brightly coloured, mis-matched socks.

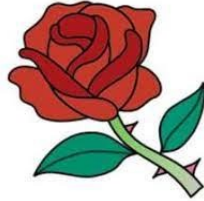
Wear them at home, nursery, school, college, university, work, play, travel, on holiday...wherever you are and whatever you're doing on 21 March!

Make sure to take pictures and videos and post them on Facebook, Twitter and Instagram using the hashtags #LotsOfSocks,

#WorldDownSyndromeDay and #WSD20...we love seeing and sharing everyone's #LotsOfSocks pictures!

Please wear your odd socks to school on Friday 19th March to support this important event. You can also wear your odd socks on Sunday 21st March at home!

GOOSTREY ROSE DAY 2021



The Committee was forced to cancel most of 2020 Rose Day due to the Covid-19 pandemic but is determined to do as much as possible in 2021. However there remains considerable uncertainty surrounding the exit from lockdown with Step 4 (lifting of final restrictions) scheduled for no earlier than 21st June, only five days before this year's event on Saturday 26th June.

Announcing the 2021 plan, Rose Day Chair Christina Burgess said: "Although we are hoping lockdown will have been lifted by Rose Day, the uncertainty has made 2021 planning problematic. Nevertheless, we are confident we can conduct the crowning ceremony for Cate, accompanied by her attendants, as well as that for Rosebud Queen, Rose Worsley. The exact format and location of the ceremony will be decided later once the overall situation becomes clearer.

We will conduct all the usual competitions, although how they will be judged will be determined nearer the time but on-line judging, which was used to such good effect last year, will no doubt play a part.

Following on from last year's successful Rose Day at Home there will again be a special programme broadcast on Dane Sound Radio and the Goostrey Archive Group will be organising another Treasure Hunt. Villagers will be encouraged to decorate their gardens with banners and bunting as usual.

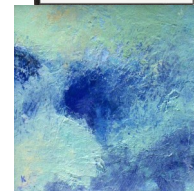
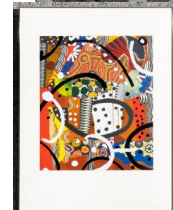
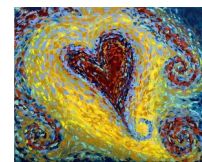
Unfortunately, lockdown exit uncertainty has meant we cannot commit to the more costly aspects of Rose Day and so, for 2021, we will not be able to host the full procession with floats, the main event on the school field with Maypole Dancing, stalls and marquees, or the evening Ceilidh. As a result, we will not produce a 2021 Rose Day program.

However, we may be able to organise a scaled down procession, but we will have to wait until nearer the time before we can make that decision on its precise format.

There will be no Rose Queen or Rosebud Queen selection this year but we will find roles for two Rosebud Queens in 2022, one from Year 3 and another from Year 2 in order to ensure no cohort misses out. Rose Day is incredibly special and everyone in Goostrey, especially the children, looks forward to it but I am sure they will understand why it cannot happen in all its glory this year.

Calling All Budding Goostrey Artists

Would you like to get involved in a competition?



The Young Artists' Summer Show is a free, open submission exhibition for young artists aged 5 - 19 years studying in the UK and British schools overseas.

We have registered Goostrey School for this competition.

Next, students, their parents/guardians or their teachers can submit artworks. These artworks are then judged by a panel of artists and arts professionals with selected artworks displayed online and on-site at the Royal Academy of Arts.

What kind of artworks do they accept?

The artwork can be made using any medium (a word for the materials you've used to create your piece). It can be a painting, sculpture, photograph, installation, video, drawing, or a combination. There is no theme so artworks can be of any subject and we don't mind when you made the artwork as long as you are between 5-19 when you submit it. We also welcome collaborative pieces.

- Key dates for 2021
- Submission closes 26 April 2021
- Judging May 2021
- Online and onsite exhibitions open 11 July 2021

How can I enter?

Submitting artwork is completely free and is done online. Once the school is registered, which we are, your artworks can be submitted. If you're 12 or under, a teacher or parent/guardian will need to enter for you.

Each student can submit up to three artworks of any type and there is no theme. When you enter, we'll ask for images of your artwork plus some information about the piece such as title, size, and a little text about the artwork and why you made it. Your artwork will be seen by our panel of judges and the selected pieces will be shown in our online exhibition. Some of the artworks will also be shown at the Royal Academy of Arts.

[Young Artists' Summer Show | Royal Academy](#)



Tennis is back in Goostrey – Easter camps and coaching for children

Goostrey tennis courts reopen at the end of March – which means there’s Easter holiday fun and structured tennis coaching available for children.



Easter Holiday fun for children

There’s a choice of two 2-hour tennis fun and fitness sessions each morning over two weeks in the Easter holidays – from Tuesday April 6th-Friday 9th and from Monday April 12th-Friday 16th at the Boothbed Lane courts owned by the VHPFF.



Children’s 2021 coaching programme

After the Easter holidays, the annual weekend children’s coaching programme begins on Friday April 23rd/Saturday 24th.

For more details and booking forms for the Easter camps and the children’s 2021 coaching programme, please contact LTA Coach David Richardson on 07545 283718 or children’s programme administrator Alison Richardson on 07885 804246, or email play.tennis@hotmail.co.uk.

Contact Tracing

As children return to school it is likely that we will see more instances of positive cases and the need for schools to complete contact tracing. As a reminder the definition of a close contact is:

A contact is defined as a person who has had contact (see below) at any time from **two days** before onset of symptoms (or time of test if asymptomatic) to 10 days after onset of symptoms (or test):

a person who has had face-to-face contact (within one metre) with someone who has tested positive for coronavirus (COVID-19), including:

- being coughed on, or
- having a face-to-face conversation, or
- having skin-to-skin physical contact, or
- any contact within one metre for one minute or longer without face-to-face contact

a person who has been within 2 metres of someone who has tested positive for coronavirus (COVID-19) for more than 15 minutes

a person who has travelled in a small vehicle *with* someone who has tested positive for coronavirus (COVID-19) or in a large vehicle *near* someone who has tested positive for coronavirus (COVID-19)

people who spend significant time in the same household as a person who has tested positive for coronavirus (COVID-19)

You will notice that the infectious period has been updated to 2 full days before the onset of symptoms or test.

Lateral Flow Testing for members of households, childcare or support bubbles of pupils, students and staff of schools, nurseries and colleges

You can now request lateral flow testing kits for your households

Please follow link below for further information or refer to the separate News Item sent out to all families today.

<https://www.gov.uk/order-coronavirus-rapid-lateral-flow-tests>



Before entering any part of the school building please read the questions below:

In the last 14 days have you or any member of your household tested positive for Covid-19?

In the last 14 days have you or any member of your household displayed symptoms of Covid-19?

High temperature

New continuous cough





Loss of, or change to, your sense of taste/smell

Have you been identified by test and trace, or any other official source, as a 'close contact' of someone who has tested positive for Covid-19, within the last 14 days?

If you have answered yes to any of the above, please DO NOT enter the school building.

Thank You.

COVID-19 (coronavirus) absence: A quick guide for parents / carers

What to do if...	Action needed	Back to school...
 <p>...my child has COVID-19 (coronavirus) symptoms*</p>	<ul style="list-style-type: none"> • Child shouldn't attend school • Child should get a test • Whole household self-isolates while waiting for test result • Inform school immediately about test results 	<p>...when child's test comes back negative</p>
 <p>...my child tests positive for COVID-19 (coronavirus)</p>	<ul style="list-style-type: none"> • Child shouldn't attend school • Child self-isolates for at least 10 days from when symptoms* started (or from day of test if no symptoms) • Inform school immediately about test results • Whole household self-isolates for 14 days from day when symptoms* started (or from day of test if no symptoms) - <i>even if someone tests negative during those 14 days</i> 	<p>...when child feels better, and has been without a fever for at least 48 hours</p> <p>They can return to school after 10 days even if they have a cough or loss of smell / taste. These symptoms can last for several weeks once the infection is gone.</p>
 <p>...somebody in my household has COVID-19 (coronavirus) symptoms*</p>	<ul style="list-style-type: none"> • Child shouldn't attend school • Household member with symptoms should get a test • Whole household self-isolates while waiting for test result • Inform school immediately about test results 	<p>...when household member test is negative, and child does not have COVID-19 symptoms*</p>
 <p>...somebody in my household has tested positive for COVID-19 (coronavirus)</p>	<ul style="list-style-type: none"> • Child shouldn't attend school • Whole household self-isolates for 14 days from day when symptoms* started (or from day of test if no symptoms) - <i>even if someone tests negative during those 14 days</i> 	<p>...when child has completed 14 days of self-isolation, even if they test negative during the 14 days</p>

* Symptoms include at least one of a high temperature; a new continuous cough; a loss of or change to your sense of smell or taste. See more at: <https://www.nhs.uk/conditions/coronavirus-covid-19/symptoms/>

What to do if...	Action needed	Back to school...
<p>...NHS Test and Trace has identified my child as a 'close contact' of somebody with symptoms* or confirmed COVID-19 (coronavirus)</p>	<p>•Child shouldn't attend school •Child self-isolates for 14 days (as advised by NHS Test and Trace) – even if they test negative during those 14 days •Rest of household does not need to self-isolate, unless they are a 'close contact' too</p>	<p>...when the child has completed 14 days of self-isolation, even if they test negative during those 14 days</p>
<p>...we / my child has travelled and has to self-isolate as part of a period of quarantine</p>	<p>•Do not take unauthorised leave in term time •Consider quarantine requirements and FCO advice when booking travel •Provide information to school as per attendance policy</p> <p>Returning from a destination where quarantine is needed:</p> <p>•Child shouldn't attend school •Whole household self-isolates for 14 days – even if they test negative during those 14 days</p>	<p>...when the quarantine period of 14 days has been completed for the child, even if they test negative during those 14 days</p>
<p>...we have received advice from a medical / official source that my child must resume shielding</p>	<p>•Child shouldn't attend school •Contact school as advised by attendance officer / pastoral team •Child should shield until you are informed that restrictions are lifted and shielding is paused again</p>	<p>...when school / other agencies inform you that restrictions have been lifted and your child can return to school again</p>
<p>....I am not sure who should get a test for COVID - 19 (coronavirus)</p>	<p>•Only people with symptoms* need to get a test •People without symptoms are not advised to get a test, even if they are a 'close contact' of someone who tests positive</p>	<p>...when conditions above, as matching your situation, are met</p>



Please click on the link below for full details of our after school provision and electronic copies of our registration and booking forms.

We are open Monday to Friday - 3pm to 6pm.

If you would like to see what the children have been up to this week, please follow us on Facebook or Twitter.

<https://www.goostreyallstars.co.uk/>



Useful contacts and numbers.....

If there's any other information that you feel should be added to this page, as a weekly standing item, please let me know.

www.goostreypreschool.org.uk

Telephone: 07471 756720 - available during pre-school hours only.



Please click on the link below for full details of our after school provision and electronic copies of our registration and booking forms.

We are open Monday to Friday - 3pm to 6pm.

If you would like to see what the children have been up to this week, please follow us on Facebook or Twitter.

<https://www.goostreyallstars.co.uk/>



Before School Club

If you would like to enrol your child for Goostrey Before School Club, please either download a booking form from our website www.goostrey.cheshire.sch.uk or collect from the reception desk. The cost is £3.00 per session and the club operates on each school day, from 8.00 AM to 8.55 AM. Please note no food is served at this club.

The Chair of Governors and the Head teacher meet at least once a week. If you have anything you would like them to discuss / consider please let us know. We will always respond to you.

The web address for ordering school uniform is:
www.myschoolstyle.com/school/goostrey

Class pages, on the school website have lots of up to date information for your child's class. Please keep looking at these as they are updated every week for you. Thank you

Compliments and Comments and Suggestions.

If you wish to give school general feedback about any aspect of school life, please email either Miss Atkins on head@goostrey.cheshire.sch.uk or class teachers, whose email addresses are on each class page on the website; <http://www.goostrey.cheshire.sch.uk/classes>

In current circumstances we are not able to operate our normal open door policy.