



01270 918940



[admin@goostrey.cheshire.sch.uk](mailto:admin@goostrey.cheshire.sch.uk)



[www.goostrey.cheshire.sch.uk](http://www.goostrey.cheshire.sch.uk)



**24th November 2023**

**Dear Families,**

**The PTA have 2 stalls at St Luke's Christmas Fair tomorrow—more details on page 6. The chocolate tombola will be epic and well worth a visit.**



"There will be a Giving Tree perched at both the Infants and Juniors during the week running up to Christmas.  
Here—you will be able purchase a gift tag to support the children of the Elizabethfontein School at Christmas time "

**Please see page 2 for more details**

### Useful information

**Before and after school clubs :** booking for ms available on school website  
[http://www.goostrey.cheshire.sch.uk/serve\\_file/48433](http://www.goostrey.cheshire.sch.uk/serve_file/48433)

**School uniform official supplier - other options are available, please see the school website for more information.**  
[www.myschoolstyle.com/school/goostrey](http://www.myschoolstyle.com/school/goostrey)

On-line payment website address [www.cheshireeast.gov.uk/schoolshop](http://www.cheshireeast.gov.uk/schoolshop)

SENCo [mr.campion@goostrey.cheshire.sch.uk](mailto:mr.campion@goostrey.cheshire.sch.uk)

**Income Related Free School Meals:** [freeschoolmeals@cheshireeast.gov.uk](mailto:freeschoolmeals@cheshireeast.gov.uk) or visit website for further information  
[https://www.cheshireeast.gov.uk/schools/school-meals/free\\_school\\_meals.aspx](https://www.cheshireeast.gov.uk/schools/school-meals/free_school_meals.aspx)

***Term dates for 23-24 and 24-25 are on our website***

The school's official communication with families comes through the newsletter, website, class pages, messages through the app, email and occasionally paper letters.

**The PTA have Facebook for information** Goostrey Community Primary School PTA  
<https://www.facebook.com/GCPSPTA>



## ELIZABETHFONTEIN GIVING TREE

CHRISTMAS IS AN EXCITING TIME FOR EVERYONE, BUT, IT CAN BE DIFFICULT FOR THOSE WHO ARE IN NEED. WHILE PEOPLE ALL OVER THE COUNTRY RECEIVE DOZENS OF GIFTS AT CHRISTMAS TIME, MANY PEOPLE AROUND THE WORLD MAY NOT EVEN EXPECT TO HAVE ONE.

WE ARE HELPING TO MAKE SOME REAL IMPROVEMENTS TO THE SCHOOL AT ELIZABETHFONTEIN WHICH TRULY CHANGE THE LIVES OF BOTH THE TEACHERS & CHILDREN AND, WITH YOUR SUPPORT, WOULD LOVE TO CONTINUE TO DO SO.

WHAT BETTER TIME TO GIVE TO OUR FRIENDS AT CHRISTMAS!

IF YOU WOULD LIKE TO HELP, SIMPLY PURCHASE A GIFT TAG

£5   £10   £15

SCAN IN THE QR CODE AND THIS WILL TAKE YOU TO THE CHRISTMAS GIVING TREE DONATION PAGE.



THANK YOU FOR ALL YOUR SUPPORT!  
MERRY CHRISTMAS!



**Marcia** competed at the North West Rhythmic Gymnastics Championships in Wigan on 18th November.

She won Gold In her age category and now the NW title holder.

Well done Marcia !



**Bella** has been working hard in her swimming lessons and was very excited to move up to stage two. We are really proud of her!



Please keep sending your child's achievements for the newsletter so we can celebrate them together.

We love knowing about what the pupils are doing both in and out of school.

Childrens Society

## CHRISTINGLE SERVICE

At St Luke's Church Goostrey

Sunday 10th December

Time 5pm,

All welcome for this fun Christmas Service.  
Supporting the Children's Society .

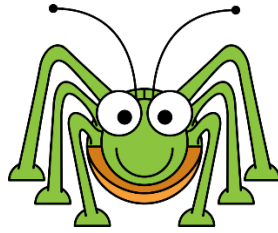
If possible, please can your child bring their Childrens Society  
Christingle Collection Envelopes back to school before Friday the 8th  
December or bring to the Christingle Service.  
Many thanks



The Children's Commissioner has launched [The Big Ambition survey](https://childrenscommissioner.gov.uk/thebigambition) to understand what children want ahead of the next General Election.

Please share this link or QR code with young people so they can have their say: <https://childrenscommissioner.gov.uk/thebigambition>.





**P.T.A**

# Beetle Drive

## Fantastic Family Fun!

Come and join in the fun

Junior Hall

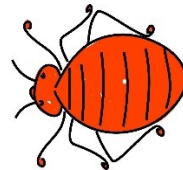
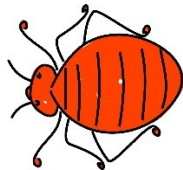
Friday 8<sup>th</sup> December

6 – 7.30 pm

£2 per person

Prizes to be won!

Refreshments available





**ST LUKE'S**  
**GOOSTREY**

# **CHRISTMAS FAIR**

**Saturday, 25<sup>th</sup>**

**November**

**11.00am – 1.00pm**

**in the Village Hall**

**FATHER CHRISTMAS**

**will be there**

**Tombola, Raffle, Gifts**

**Refreshments**

**Everyone welcome**



# The Goostrey Tutor



Hello, Goostrey Community Primary School! I'm Vicky - The Goostrey Tutor! Primary school teacher of 12 years, but now I'm offering the children of Goostrey a variety of out-of-school opportunities for some fun learning!



Email Vicky at [vicky.teachadvice@gmail.com](mailto:vicky.teachadvice@gmail.com) for more information or to fill in a tutoring enquiry form

## What I offer:

- Local face-to-face tutoring
- Downloadable activity packs
- Free printables/activities to enjoy at home

## COMING EARLY 2024:

I'm taking enquiries & interest for small group workshops (for various subjects and topics)

 **Goostrey Scout Hut, Main Road**

@the\_goostrey\_tutor  
@inspiring\_little.learners

Scan for enquiry form, learning resources and social media links:



[linktr.ee/the\\_goostrey\\_tutor](https://linktr.ee/the_goostrey_tutor)  
[www.schoolasacucumber.com](http://www.schoolasacucumber.com)



Use code **GOOSTREYCPS** at checkout for 10% off printables



## PARENT REVIEW

"Vicky is brilliant. She is friendly, engaging and was able to strike a rapport with my daughter from the first moment she met her, building trust and confidence.

Vicky has a great style which makes learning fun and this has maximum impact - I could tell straight away that my daughter's confidence and skill was improving.

I highly recommend Vicky."



Please note: I am a fully qualified primary school teacher with 10yrs+ experience teaching in U.K. schools. I have a valid Enhanced DBS certificate. My services are not organised/run by the school. The school does not endorse/take responsibility for anything not directly organised by the school.

***Key dates rest of the autumn term:***

**Infant Nativity performances:**

**Tuesday 19th December and Wednesday 20th December, 9.30am both days, Village Hall. These will be ticketed—2 per family. Tickets are free but there will be a collection for any spare cash you may have to cover costs. Thank you**

**Junior Carol Services:**

**Tuesday 19th December 1.30pm St Luke's Church— Year 3 and 4 families 1 ticket per child  
Thursday 21st December 9.30am St Luke's Church Year 5 and 6 families 1 ticket per child.  
There will be a collection at both services which will be split with St Luke's  
Thursday 21st December 5pm Junior Playground (weather permitting)  
everyone welcome no tickets required.**

**24th November** Items for the class Christmas hampers in—more details on the class Facebook pages. Raffles tickets will go on sale early December.

**25th November**—PTA has 2 stalls at St Luke's Christmas Fair in the Village Hall

**6th December** Christmas Jumper Day

**8th December** Beetle Drive in the school hall

**WB 11th December** Christmas Shops

***School closes for Christmas on Friday 22nd December and we are all back on Monday 8th January***

**Next term:**

**12th January** Year 4 cake sale

**15th January** PTA meeting 7pm Space Invader

**26th January**—school disco Village Hall

**9th February** Year 3 cake sale

**8th March** Film Night



Year 6 national tests and assessments will be ongoing throughout the summer term until the **end of June 2024**. It is vital that your child attends school for the whole of this period.

**YEAR 6 SATS ARE WB 13TH MAY 2024 and the writing assessments are until the end of June.**

## **TAKING CHILDREN ON HOLIDAY DURING TERM TIME**

### **A guide for parents and carers**

#### **Frequently asked questions**

**Am I entitled to take my child out of school for a family holiday?**

- No.** Parents have a legal duty to ensure that their children attend school or the alternative provision on a regular basis
- The Education Act 1996 makes it a criminal offence for a parent to *“fail to secure their child’s regular attendance at the school”*
- The amendments to the 2006 Regulations remove any reference to *family holidays, extended leave and the statutory threshold of ten school days.*
- The amendments make clear that **Head Teachers may not grant any leave of absence (holiday) during term time unless there are exceptional circumstances**
- The amendments give **parents no entitlement** to take their child out of school for a holiday in term time
- The Head Teacher and Governing Body will determine what the exceptional circumstances are

**If we decide to take a holiday during term time what should we do?**

- The parent/carer with whom the child resides must apply in writing to the school
- The letter/application must explain the exceptional circumstance surrounding the request for the leave of absence

**What will the school do then?**

- The Head Teacher will determine whether the exceptional circumstance ruling applies, if not the application will be declined
  - Only the Headteacher (or the Deputy) has the power to approve leave of absence applications. When making the decision the protocols and criteria laid down in the school’s attendance policy must be followed.
  - Each academic year, schools inform parents/carers via a letter, newsletter or some other communication; that they may receive a Fixed Penalty Notice if their child has unauthorised absences in term time
- You will receive a written response from the Headteacher (or the Deputy) letting you know if your application has been approved
- If the holiday goes ahead after the application has been declined the absence will be recorded as unauthorised

### What will happen if the absence is unauthorised?

- The school will decide if a Penalty Notice should be issued. If the school decide that a Penalty Notice is to be issued
- You will receive a letter from the school advising that it has referred the matter to the Local Authority and that a Penalty Notice may be issued;
- The school will inform the Local Authority that a Penalty Notice needs to be issued
- A Penalty Notice will be sent to you, accompanied by an explanatory letter; the Notice gives you the opportunity to pay a penalty fine instead of being prosecuted in the criminal courts

<b>Penalties for unauthorised absence</b>		
<b>Timeline</b>	<b>One child</b>	<b>Two children</b>
Paid within 21 days	£60 per parent	£60 per child = £120 per parent
After 21 days and before 28 days	£120 per parent	£120 per child = £240 per parent
After 28 days	You will receive a summons to appear before the Magistrates' Court on the grounds you have failed to secure your child's regular attendance	You will receive a summons to appear before the Magistrates' Court on the grounds you have failed to secure your children's regular attendance

Payments will **not** be accepted after the 28<sup>th</sup> day and payments **cannot** be paid in part or by instalments

**Each school has a designated Education Welfare Officer [educationwelfareservice@cheshireeast.gov.uk](mailto:educationwelfareservice@cheshireeast.gov.uk) or you can also telephone the main office.**

**Tel: 01270 375277**

**Website: [www.cheshireeast.gov.uk/ews](http://www.cheshireeast.gov.uk/ews)**

#### **Other leaflets are available to support you:**

- Taking action to improve attendance – explaining legal action - a guide for parents and carers
- Helping your child to attend school. The role of the EWO - a guide for parents and carers

*The expression "parent", in relation to a child or young person, includes any person who is not a parent of the child but who has parental responsibility for him/her, or who has care of the child.*

## Do you have a concern about a child?

Anyone can make a call if they have concerns about a child. This call can be made confidentially.

### Cheshire East Consultation Service

The Cheshire East Consultation Service (ChECS) is the 'front door' for access to services, support and advice for children and their families.

### General public

Phone ChECS on **0300 123 5012 (option 3)** Callers will be directed to a Unit Coordinator who will ask if the concerns are early help or safeguarding. You will then be directed to either Practitioner Support Officer for Early Help requests for support or a Social Worker ( ChECS ) for safeguarding concerns. The worker will gather your information and advise you of the next steps.

If you need to contact someone out of hours and you believe it to be an emergency that can't wait, please call our Emergency Duty Team on **0300 123 5022**.

**If you have something that you would like putting in our newsletter please email it either to [head@goostrey.cheshire.sch.uk](mailto:head@goostrey.cheshire.sch.uk) or [admin@goostrey.cheshire.sch.uk](mailto:admin@goostrey.cheshire.sch.uk)**

**It needs to be with us by 12.00 on Thursday and attached to your email on a WORD document so once approved we can easily cut and paste. Thank you**

**We always welcome pieces about Goostrey pupils and their achievements outside of school. I love to hear what our pupils are celebrating and achieving outside school so we can celebrate in the newsletter and assembly.**

**The responsibility to get permission for other people's children to be on photographs lies with the sender not with the school.**

**We will usually allow local events to be advertised in the newsletter, especially if we think they will be of interest to our pupils and their families.**

**However we do not endorse or take responsibility for anything not directly organised by the school.**

## **Mid-Day Assistants Vacancies**

We are seeking enthusiastic and caring people to join our team supervising our pupils over the lunchtime breaks.

Please contact our School Business Manager, Mrs J Schurer-Lewis on 01270 918940 or via e-mail; [admin@goostrey.cheshire.sch.uk](mailto:admin@goostrey.cheshire.sch.uk) to request an application form and job description.

**Goostrey Community Primary School is committed to the safeguarding and welfare of our pupils. Successful applicants will be required to have enhanced Disclosure and Barring Service checks, and attend Basic Safeguarding awareness training**



Please click on the link below for full details of our after school provision and electronic copies of our registration and booking forms.

We are open Monday to Friday - 3pm to 6pm.

If you would like to see what the children have been up to this week, please follow us on Facebook or Twitter.

<https://www.goostreyallstars.co.uk/>



**The school's official communication with families comes through the newsletter, website, class pages, messages through the app, email and occasionally paper letters. We do not have an official Facebook account for information.**

## Useful contacts and numbers.....

If there's any other information that you feel should be added to this page, as a weekly standing item, please let me know.

[www.goostreypreschool.org.uk](http://www.goostreypreschool.org.uk)

**Telephone: 07471 756720** - available during pre-school hours only.



Please click on the link below for full details of our after school provision and electronic copies of our registration and booking forms.

We are open Monday to Friday - 3pm to 6pm.

If you would like to see what the children have been up to this week, please follow us on Facebook or Twitter.

<https://www.goostreyallstars.co.uk/>



### Before School Club

If you would like to enrol your child for Goostrey Before School Club, please either download a booking form from our website [www.goostrey.cheshire.sch.uk](http://www.goostrey.cheshire.sch.uk) or collect from the reception desk. The cost is £4.00 per session and the club operates on each school day, from 8.00 AM to 8.55 AM. Please note no food is served at this club.

The Chair of Governors and the Head teacher meet at least once a week. If you have anything you would like them to discuss / consider please let us know. We will always respond to you.

The web address for ordering school uniform is:  
[www.myschoolstyle.com/school/goostrey](http://www.myschoolstyle.com/school/goostrey)

Class pages, on the school website have lots of up to date information for your child's class. Please keep looking at these as they are updated every week for you.

Thank you

### Compliments and Comments and Suggestions.

If you wish to give school general feedback about any aspect of school life, please email either Miss Atkins on [head@goostrey.cheshire.sch.uk](mailto:head@goostrey.cheshire.sch.uk) or class teachers, whose email addresses are on each class page on the website; <http://www.goostrey.cheshire.sch.uk/classes>