



01270 918940

[admin@goostrey.cheshire.sch.uk](mailto:admin@goostrey.cheshire.sch.uk)

[www.goostrey.cheshire.sch.uk](http://www.goostrey.cheshire.sch.uk)



**8th December 2023**

**Dear Families,**

**REMINDERS:**

**Beetle Drive tonight 6pm School Hall (junior side) - more details on page 4**

1st to 18th December **hamper raffle tickets on sale—draw on 18th.**

1st to 31st December—**Christmas Trail**—see page 2—still some maps left to purchase

WB 11th December **Christmas Shops**—please see page 3

Online safety advice is on page 6—please share with your child / ren as appropriate thank you.

We have also been asked to share with you how to keep safe near water—page 7

### Useful information

**Before and after school clubs :** booking forms available on school website

[http://www.goostrey.cheshire.sch.uk/serve\\_file/48433](http://www.goostrey.cheshire.sch.uk/serve_file/48433)

**School uniform official supplier - other options are available, please see the school website for more information.**

[www.myschoolstyle.com/school/goostrey](http://www.myschoolstyle.com/school/goostrey)

On-line payment website address [www.cheshireeast.gov.uk/schoolshop](http://www.cheshireeast.gov.uk/schoolshop)

SEnCo [mr.campion@goostrey.cheshire.sch.uk](mailto:mr.campion@goostrey.cheshire.sch.uk)

**Income Related Free School Meals:** [freeschoolmeals@cheshireeast.gov.uk](mailto:freeschoolmeals@cheshireeast.gov.uk) or visit website for further information

[https://www.cheshireeast.gov.uk/schools/school-meals/free\\_school\\_meals.aspx](https://www.cheshireeast.gov.uk/schools/school-meals/free_school_meals.aspx)

***Term dates for 23-24 and 24-25 are on our website***

The school's official communication with families comes through the newsletter, website, class pages, messages through the app, email and occasionally paper letters.

The PTA have Facebook for information Goostrey Community Primary School PTA <https://www.facebook.com/GCPSPTA>



🎄 Christmas Trail 🎄

New for Christmas this year, there will be a Christmas trail around Goostrey from Friday 1st December to Sunday 31st December.

Trail sheets will be available from school reception for £1 per sheet from 1st December.

Each completed sheet earns 5 house points and there is the chance to win further house points in the New Year - more details are on the sheets.

The trail can be done in one go or over several outings, whatever suits you!

🎄 🦶 Happy Trailing 🦶 🎄

Goostrey Community Primary School PTA

# Christmas Shop

Shopping days start  
Monday 11th December

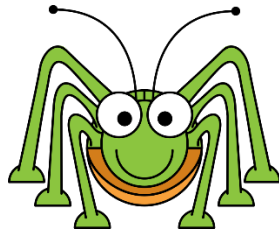
*Gifts for all the family  
and loved ones*

---

We have some great  
gifts on sale starting  
from £1 to £5

Please bring your money  
in a named purse and  
don't forget your bag  
for life to bring your  
gifts home!





**P.T.A**

# Beetle Drive

## Fantastic Family Fun!

Come and join in the fun

Junior Hall

Friday 8<sup>th</sup> December

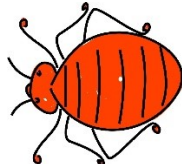
6 – 7.30 pm

£2 per person

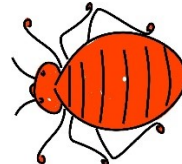
Prizes to be won!

Refreshments available

1E0081725C - K001010101



1E0081725C - K001010101



I'm home from university for the Christmas period (evening of the 19th Dec-4th Jan) and have some availability for daytime and evening baby sitting. Please contact [mrs.fairhurst@goostrey.cheshire.sch.uk](mailto:mrs.fairhurst@goostrey.cheshire.sch.uk) if you would like to discuss or book in. Thank you and happy festivities over the coming weeks.

Francesca Fairhurst (Mrs Fairhurst's, daughter)



**Max Lintell** won the “Smiler Award” at his under 9’s Knutsford Rugby team vs Burnage U9’s. The Smiler Award is given to the player who contributes greatly to the match play, shows leadership within their team, and displays the attributes and values that the team believe in (encouragement, listening, determination) – as well as several assists Max provided that led to several tries through the course of the morning.

We are very proud of how well he is doing in rugby and how much he enjoys it

Please keep sending your child’s achievements for the newsletter so we can celebrate them together.

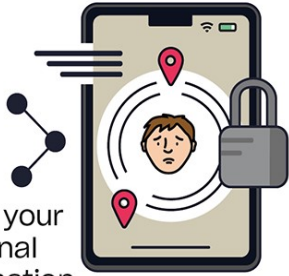
We love knowing about what the pupils are doing both in and out of school.



# STAY SAFE ONLINE

1

Don't share your personal information



2

Only talk to people that you know



3

Don't meet up with anyone you have only met online



4

Only accept friend requests from people you know personally



5

Always think carefully about what you post



6

Make use of the privacy settings on all of your social media accounts



7

Remember that not everyone online is who they say they are



8

Report inappropriate content immediately



9

Only share images that you'd be comfortable with your friends and family seeing



10

Never share your passwords





Royal Life Saving Society UK issues winter water safety advice

## Urgent Winter Water Safety Message

RLSS UK offer safety advice for winter water safety, with simple steps to keep safe during the winter:

1. Never go onto the ice to play, to retrieve an object, or a pet
2. Never enter the ice to rescue somebody, call 999 and ask for the Fire and Rescue Service [What to do if you fall through the ice:](#)
  - Keep calm and shout for 'help'
  - Spread your arms across the surface of the ice in front of you
  - If the ice is strong enough, kick your legs to slide onto the ice
  - Lie flat and pull yourself towards the bank
  - If the ice breaks, work your way to the bank-breaking the ice in front of you anyway
  - If you cannot climb out, wait for help and keep as still as possible. Press your arms by your side and keep your legs together. Keep your head clear of the waterOnce you are safe, go to hospital immediately for a check up

[What to do if you see someone fall through the ice:](#)

- Shout for assistance and phone the emergency services – call 999 or 112
  - Do not walk or climb onto the ice to attempt a rescue
  - Shout to the casualty to 'keep still' and offer reassurance to keep them calm
  - Try and reach them from the bank using a rope, pole, tree branch, clothing tied together or anything else which can extend your reach
  - When reaching from the bank, lie down to avoid being pulled onto the ice
  - If you cannot reach them, slide something which floats, such as a plastic bottle or football, across the ice for them to hold onto to stay afloat whilst help is on the way
- If the casualty is too far away, do not attempt to rescue them. Wait for the emergency services while calming and reassuring the casualty

<https://www.rlss.org.uk/winter-water-safety>

[Winter water safety](#) | [Staying safe on our canals](#) | [Canal & River Trust \(canalrivertrust.org.uk\)](#)

Childrens Society

## CHRISTINGLE SERVICE

At St Luke's Church Goostrey

Sunday 10th December

Time 5pm,

All welcome for this fun Christmas Service.  
Supporting the Children's Society .

If possible, please can your child bring their Childrens Society  
Christingle Collection Envelopes back to school before Friday the 8th  
December or bring to the Christingle Service.  
Many thanks

### **SANTA'S SLEIGH 2023**

On **Tuesday and Wednesday 12th and 13<sup>th</sup>** December Goostrey Scouts will once again be running Santa's sleigh, with the following route:

Tuesday 12<sup>th</sup>: Goostrey West - Booth Bed Lane, Sandy Lane, New Platt Lane, Blackberry Gardens and Harrison Drive

Wednesday 13<sup>th</sup>: Goostrey East - Bank View, Brooklands Drive, Buckbean Way, Willow Lane and Shearbrook.

The Sleigh will be fitted with a GPS tracker, so anyone can send the text message G123456# to 07933 617016 and they will receive a link to Google map, showing the exact location of the sleigh.

Donations can be by cash or text this year.

For more information visit the Holmes Chapel Partnership website: <https://www.hcpartnership.org.uk/santas-sleigh>

Santa is looking forward to seeing the children of Goostrey VERY SOON!!



***Key dates rest of the autumn term:***

**Infant Nativity performances:**

Tuesday 19th December and Wednesday 20th December, 9.30am both days, Village Hall. These will be ticketed—2 per family. Tickets are free but there will be a collection for any spare cash you may have to cover costs. Thank you

**Junior Carol Services:**

Tuesday 19th December 1.30pm St Luke's Church— Year 3 and 4 families 1 ticket per child  
Thursday 21st December 9.30am St Luke's Church Year 5 and 6 families 1 ticket per child.  
There will be a collection at both services which will be split with St Luke's  
Thursday 21st December 5pm Junior Playground (weather permitting)  
everyone welcome no tickets required.

WB 11th December Christmas Shops

***School closes for Christmas on Friday 22nd December and we are all back on Monday 8th January***

**Next term:**

**12th January** Year 4 cake sale

**15th January** PTA meeting 7pm Space Invader

**26th January**—school disco Village Hall

**9th February** Year 3 cake sale

**8th March** Film Night

Year 6 national tests and assessments will be ongoing throughout the summer term until the **end of June 2024**. It is vital that your child attends school for the whole of this period.

**YEAR 6 SATS ARE WB 13TH MAY 2024 and the writing assessments are until the end of June.**

## **TAKING CHILDREN ON HOLIDAY DURING TERM TIME**

### **A guide for parents and carers**

#### **Frequently asked questions**

**Am I entitled to take my child out of school for a family holiday?**

- No.** Parents have a legal duty to ensure that their children attend school or the alternative provision on a regular basis
- The Education Act 1996 makes it a criminal offence for a parent to “*fail to secure their child’s regular attendance at the school*”
- The amendments to the 2006 Regulations remove any reference to *family holidays, extended leave and the statutory threshold of ten school days*.
- The amendments make clear that **Head Teachers may not grant any leave of absence (holiday) during term time unless there are exceptional circumstances**
- The amendments give **parents no entitlement** to take their child out of school for a holiday in term time
- The Head Teacher and Governing Body will determine what the exceptional circumstances are

**If we decide to take a holiday during term time what should we do?**

- The parent/carer with whom the child resides must apply in writing to the school
- The letter/application must explain the exceptional circumstance surrounding the request for the leave of absence

**What will the school do then?**

- The Head Teacher will determine whether the exceptional circumstance ruling applies, if not the application will be declined
  - Only the Headteacher (or the Deputy) has the power to approve leave of absence applications. When making the decision the protocols and criteria laid down in the school’s attendance policy must be followed.
  - Each academic year, schools inform parents/carers via a letter, newsletter or some other communication; that they may receive a Fixed Penalty Notice if their child has unauthorised absences in term time
- You will receive a written response from the Headteacher (or the Deputy) letting you know if your application has been approved
- If the holiday goes ahead after the application has been declined the absence will be recorded as unauthorised

### What will happen if the absence is unauthorised?

- The school will decide if a Penalty Notice should be issued. If the school decide that a Penalty Notice is to be issued
- You will receive a letter from the school advising that it has referred the matter to the Local Authority and that a Penalty Notice may be issued;
- The school will inform the Local Authority that a Penalty Notice needs to be issued
- A Penalty Notice will be sent to you, accompanied by an explanatory letter; the Notice gives you the opportunity to pay a penalty fine instead of being prosecuted in the criminal courts

<b>Penalties for unauthorised absence</b>		
<b>Timeline</b>	<b>One child</b>	<b>Two children</b>
Paid within 21 days	£60 per parent	£60 per child = £120 per parent
After 21 days and before 28 days	£120 per parent	£120 per child = £240 per parent
After 28 days	You will receive a summons to appear before the Magistrates' Court on the grounds you have failed to secure your child's regular attendance	You will receive a summons to appear before the Magistrates' Court on the grounds you have failed to secure your children's regular attendance

Payments will **not** be accepted after the 28<sup>th</sup> day and payments **cannot** be paid in part or by instalments

**Each school has a designated Education Welfare Officer [educationwelfareservice@cheshireeast.gov.uk](mailto:educationwelfareservice@cheshireeast.gov.uk) or you can also telephone the main office.**

**Tel: 01270 375277**

**Website: [www.cheshireeast.gov.uk/ews](http://www.cheshireeast.gov.uk/ews)**

#### **Other leaflets are available to support you:**

- Taking action to improve attendance – explaining legal action - a guide for parents and carers
- Helping your child to attend school. The role of the EWO - a guide for parents and carers

*The expression "parent", in relation to a child or young person, includes any person who is not a parent of the child but who has parental responsibility for him/her, or who has care of the child.*

## Do you have a concern about a child?

Anyone can make a call if they have concerns about a child. This call can be made confidentially.

### Cheshire East Consultation Service

The Cheshire East Consultation Service (ChECS) is the 'front door' for access to services, support and advice for children and their families.

### General public

Phone ChECS on **0300 123 5012 (option 3)** Callers will be directed to a Unit Coordinator who will ask if the concerns are early help or safeguarding. You will then be directed to either Practitioner Support Officer for Early Help requests for support or a Social Worker ( ChECS ) for safeguarding concerns. The worker will gather your information and advise you of the next steps.

If you need to contact someone out of hours and you believe it to be an emergency that can't wait, please call our Emergency Duty Team on **0300 123 5022**.

**If you have something that you would like putting in our newsletter please email it either to [head@goostrey.cheshire.sch.uk](mailto:head@goostrey.cheshire.sch.uk) or [admin@goostrey.cheshire.sch.uk](mailto:admin@goostrey.cheshire.sch.uk)**

**It needs to be with us by 12.00 on Thursday and attached to your email on a WORD document so once approved we can easily cut and paste. Thank you**

**We always welcome pieces about Goostrey pupils and their achievements outside of school. I love to hear what our pupils are celebrating and achieving outside school so we can celebrate in the newsletter and assembly.**

**The responsibility to get permission for other people's children to be on photographs lies with the sender not with the school.**

**We will usually allow local events to be advertised in the newsletter, especially if we think they will be of interest to our pupils and their families.**

**However we do not endorse or take responsibility for anything not directly organised by the school.**

## **Mid-Day Assistants Vacancies**

We are seeking enthusiastic and caring people to join our team supervising our pupils over the lunchtime breaks.

Please contact our School Business Manager, Mrs J Schurer-Lewis on 01270 918940 or via e-mail; [admin@goostrey.cheshire.sch.uk](mailto:admin@goostrey.cheshire.sch.uk) to request an application form and job description.

**Goostrey Community Primary School is committed to the safeguarding and welfare of our pupils. Successful applicants will be required to have enhanced Disclosure and Barring Service checks, and attend Basic Safeguarding awareness training**





Please click on the link below for full details of our after school provision and electronic copies of our registration and booking forms.

We are open Monday to Friday - 3pm to 6pm.

If you would like to see what the children have been up to this week, please follow us on Facebook or Twitter.

<https://www.goostreyallstars.co.uk/>



**The school's official communication with families comes through the newsletter, website, class pages, messages through the app, email and occasionally paper letters. We do not have an official Facebook account for information.**

## Useful contacts and numbers.....

If there's any other information that you feel should be added to this page, as a weekly standing item, please let me know.

[www.goostreypreschool.org.uk](http://www.goostreypreschool.org.uk)

**Telephone: 07471 756720** - available during pre-school hours only.



Please click on the link below for full details of our after school provision and electronic copies of our registration and booking forms.

We are open Monday to Friday - 3pm to 6pm.

If you would like to see what the children have been up to this week, please follow us on Facebook or Twitter.

<https://www.goostreyallstars.co.uk/>



### Before School Club

If you would like to enrol your child for Goostrey Before School Club, please either download a booking form from our website [www.goostrey.cheshire.sch.uk](http://www.goostrey.cheshire.sch.uk) or collect from the reception desk. The cost is £4.00 per session and the club operates on each school day, from 8.00 AM to 8.55 AM. Please note no food is served at this club.

The Chair of Governors and the Head teacher meet at least once a week. If you have anything you would like them to discuss / consider please let us know. We will always respond to you.

The web address for ordering school uniform is:  
[www.myschoolstyle.com/school/goostrey](http://www.myschoolstyle.com/school/goostrey)

Class pages, on the school website have lots of up to date information for your child's class. Please keep looking at these as they are updated every week for you.  
Thank you

### Compliments and Comments and Suggestions.

If you wish to give school general feedback about any aspect of school life, please email either Miss Atkins on [head@goostrey.cheshire.sch.uk](mailto:head@goostrey.cheshire.sch.uk) or class teachers, whose email addresses are on each class page on the website; <http://www.goostrey.cheshire.sch.uk/classes>