



15 11 24

01270 918940

admin@goostrey.cheshire.sch.uk

www.goostrey.cheshire.sch.uk



Dear Families,

Our poppy appeal raised a total of £490.51.

Lots happening over the next 2 weeks in school, above and beyond the usual high quality lessons—forest school sessions (half a day for each class) hedge planting, and extra sports day for all classes with our sporting coaches—Pickleball and archery. We won the extra games day because we were the Summer Games Winner. Well done Goostrey pupils!

Beetle Drive next Friday—please see page 4 for more details.

Film Night was a big success again—thank you PTA, our children's behaviour was outstanding.

Before and after school clubs : booking forms available on school website

http://www.goostrey.cheshire.sch.uk/serve_file/48433

School uniform official supplier - other options are available, please see the school website for more information.

www.myschoolstyle.com/school/goostrey

On-line payment website address www.cheshireeast.gov.uk/schoolshop

SENCo mr.warhurst@goostrey.cheshire.sch.uk

Income Related Free School Meals: freeschoolmeals@cheshireeast.gov.uk or visit website for further information

https://www.cheshireeast.gov.uk/schools/school-meals/free_school_meals.aspx

Term dates for 24-25 and 25-26 are on our website

The school's official communication with families comes through the newsletter, website, class pages, messages through the app, email and occasionally paper letters.

The PTA have Facebook for information Goostrey Community Primary School PTA

<https://www.facebook.com/GCPSPTA>

Dance experience

The Year 1 and 2 dance session on Wednesday was super energetic and fun. The 16 children learnt some sassy moves to the song Cheerleader. The session began with a quick game of musical statues then it was on to the serious stuff of learning the steps, clicks, turns and shimmies. At the end of the session each school group performed to the audience. We joined with Hermitage Primary to do our final performance. There was a large audience and all the children were confident to show off their new moves.

Many thanks to supportive parent group and well done to our keen dancers.

Clemmie was presented with a Best Young Handler award on the weekend for her work with our puppy, Winston. She has been doing his training every Sunday night at class and practices with him each day. We were very proud of her as she was the only young handler in the assessment group.





Oliver's Pumpkins

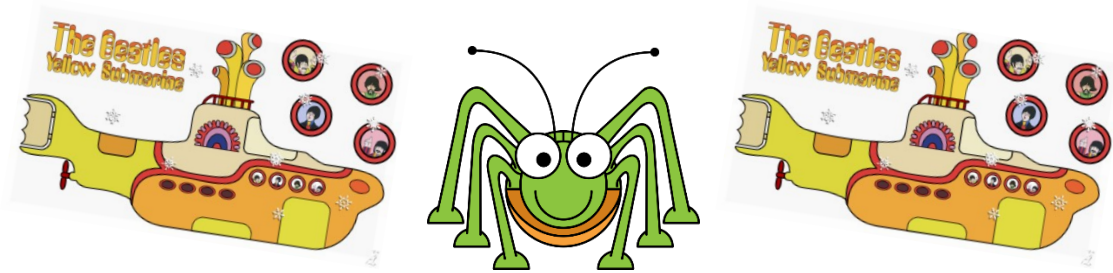
We would like to thank all the pupils and their families for visiting us and helped raise funds for the school PTA. We hope you enjoyed carving/ eating them.

During the half term holiday we also made donations of pumpkins to the Middlewich & District Foodbank and to the Play Team at the Children's Ward of Leighton Hospital.

Thank you for supporting a local business and the school PTA. We have rounded up the total donation to £100.

Many thanks,

Oliver and Family



P.T.A

Beetle Drive

Fantastic Family Fun!

Come and join in the fun

Junior Hall

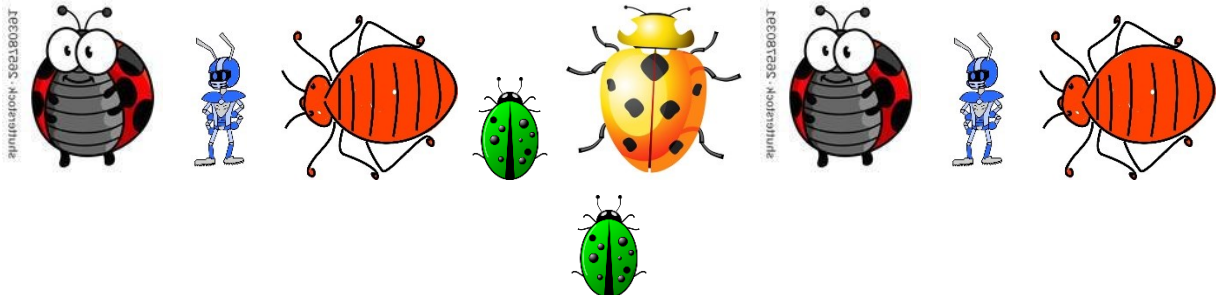
Friday 22nd November 2024

6.15 – 7.30 pm

£1 per person

Prizes to be won!

Refreshments available





Help us to raise free funds as you shop this Christmas

Every Christmas present you buy is a present for us!



Scan the QR code to make a difference every time you shop online



- 1 Scan the QR code
- 2 Download the easyfundraising app
- 3 Raise a donation everytime you shop online through easyfundraising

Get free donations from thousands of retailers including:

Boots

JOHN LEWIS

ebay

currys

M&S

H.M

GROUPON

ASOS

Argos



Etsy

very

Find us at:

**Goostrey Community Primary
School PTA - Cheshire**

The background of the entire graphic is a light green color with a repeating pattern of recycling symbols (three arrows forming a triangle) in a slightly darker shade of green. The symbols are scattered across the background.

Thank You!

RECYCLE 4 SCHOOL

**Thank you to everyone for
your generous donations.**

**Our next collection is
February**

(details to follow)

GCPS PTA

Let's Make This Christmas Extra Special!

Dear Parents and Carers,

We're excited to announce that we are taking part in a Christmas Ornaments Fundraiser! This is a fantastic opportunity to create unique and personalised Christmas ornaments while supporting our school.

How it works:

Order Online: Visit the For Keepsake website here - [Goostrey Primary Fundraiser](#) and select your desired ornament style/s.

Upload Your Photos: Add your favourite family photos or school memories.

Customise: Choose between colour or black and white photos. As well as bow colours for two of the options.

Support Our School: For every ornament ordered through our school's link, we'll earn £1.

Ornament Options:

School Themed Double Sided Personalised Photo Ornament: This ornament has been specifically designed to showcase our wonderful school. What a lovely way to remember these fleeting years, not to mention a very special gift for grandparents!

Family Name Christmas Ornament: A timeless keepsake to cherish for years to come, insert your family name and upload your family photo.

The Sibling One / Double-Sided Gold Border Christmas Ornament 2024: This is a double-sided ornament where you can add **ANY** family member. Furry ones and Human ones! Get creative!

Ordering Deadline: November 28th, 2024

Delivery: Between December 16th and 19th, 2024

By purchasing these beautiful ornaments, you're not only creating lasting memories but also contributing to our school's fundraising efforts.

Let's make this Christmas extra special!

WE ARE TAKING PART IN THE
**Christmas
 Ornaments Fundraiser**

Order Easily Online [www forkeepsake.uk](http://www.forkeepsake.uk)

**SCHOOL
 YEAR
 CHRISTMAS
 ORNAMENT**

FRONT

£6
 each

BACK

2024/2025
 GOOSTREY COMMUNITY
 PRIMARY SCHOOL

G C
 P S

£1 per ornament to your PTFA

**FAMILY ORNAMENT
 OF THE YEAR**

I WILL ADD YOUR OWN FAMILY NAME OR NICKNAME

BEAUTIFUL WAY TO CAPTURE YOUR MOST TREASURED MEMORIES FROM THE YEAR

FRONT

BACK

2024

2024

**THE PERFECT
 SIBLING
 ORNAMENT**

LEAFLETS CAME HOME YESTERDAY

FOR
KEEPSAKE

HOW TO ORDER YOUR ORNAMENTS

- 1 HEAD TO FOR KEEPSAKE SCAN THE CODE OR WWW.FORKEEPSAKE.UK**
- 2 MAKE SURE YOU ARE ON YOUR SCHOOLS FUNDRAISING PAGE**
- 3 CLICK ON YOUR CHOSEN PRODUCT/S**
- 4 SELECT YOUR PERSONALISED OPTIONS AND UPLOAD YOUR PHOTO/S**
- 5 YOUR ORNAMENTS GO BACK TO SCHOOL DURING 16 - 19 DECEMBER**

BOW COLOUR

PHOTO COLOUR

UPLOAD YOUR PHOTO/S

ADD TO CART



Keep up to date with PTA news and events on our social media pages:



goostrey_primary_school_pta



Goostrey Community Primary School PTA

<https://www.facebook.com/GCPSPTA>

Free Dress Day
on
Wednesday
27th November
Please bring in
donations of
chocolate

for our Chocolate Tombola at St Luke's Christmas Fair
on Saturday 30th November

Children's Society

CHRISTINGLE SERVICE

At St Luke's Church Goostrey

Sunday 1st December

Time 4pm,

Followed by Goostrey Lights Switch On at the Bogbean at 6pm.

All welcome to stay and join the procession with Christingle to the Bogbean.

All welcome for this fun Christmas Service.supporting the Children's Society .

CHRISTINGLE ENVELOPES CAME HOME YESTERDAY



ST LUKE'S
GOOSTREY

CHRISTMAS FAIR

Saturday, 30th

November

11.00am – 1.00pm

in the Village Hall

FATHER CHRISTMAS

will be there

Tombola, Raffle, Gifts

Refreshments



Musical Theatre Classes in Congleton

Performing Arts training led by industry professionals



 Weekly classes on Thursdays

 Astbury Village Hall, Congleton

 Class timetable available
for ages 5-16



Request our prospectus and further info by email:

 info@cheshireeastperformingarts.co.uk



Cheshire East Performing Arts is produced by Jessica Joslin and Joseph Anthony - professionally trained actors with extensive careers in London's West End and experience teaching in London and across the North West!

Our **Musical Theatre classes for children and teens** are designed to nurture talent and advance performance skills in Drama, Music and Dance. Students will take part in weekly classes and end of term performance showcases, providing an exciting opportunity to practise their craft, build their confidence, develop new friendships and create lasting memories.

Our first term will begin on Thursday 9th January 2025 and classes will continue weekly during school term time. Free parking available on site.

Find out more at facebook.com/cheshireeastperformingartsLtd

JANUARY 2025 ENROLMENT
NOW OPEN

November 20th	After school	Dance workshop Y3 and 4
November 22nd	After School	Beetle Drive
November 27th	School day	Free dress day—bring chocolate
December 4th		Christmas Jumper Day
December 4th		Dance Workshop Y5 and 6
WB December 9th		Christmas Shop
December 13th		Christmas Lunch
December 17th	9.30	Infant Nativity
December 17th	1.30	Y3 and 4 tickets for Junior Carol Service St Luke's
December 18th	9.30	Infant Nativity
December 19th	9.30	Y5 and 6 tickets for Junior Carol Service St Luke's
December 19th	5pm	Junior Carol Service junior playground—weather permitting
December 20th		School Finishes for Christmas
January 6th		School returns

Year 6 national tests and assessments will be ongoing throughout the summer term until the **end of June 2025**. It is vital that your child attends school for the whole of this period.

YEAR 6 SATS ARE WB 12TH MAY AND THEIR WRITING ASSESSMENTS CONTINUE UNTIL THE END OF JUNE

TAKING CHILDREN ON HOLIDAY DURING TERM TIME

A guide for parents and carers

Frequently asked questions

Am I entitled to take my child out of school for a family holiday?

- No.** Parents have a legal duty to ensure that their children attend school or the alternative provision on a regular basis
- The Education Act 1996 makes it a criminal offence for a parent to “*fail to secure their child’s regular attendance at the school*”
- The amendments to the 2006 Regulations remove any reference to *family holidays, extended leave and the statutory threshold of ten school days*.
- The amendments make clear that **Head Teachers may not grant any leave of absence (holiday) during term time unless there are exceptional circumstances**
- The amendments give **parents no entitlement** to take their child out of school for a holiday in term time
- The Head Teacher and Governing Body will determine what the exceptional circumstances are

If we decide to take a holiday during term time what should we do?

- The parent/carer with whom the child resides must apply in writing to the school
- The letter/application must explain the exceptional circumstance surrounding the request for the leave of absence

What will the school do then?

- The Head Teacher will determine whether the exceptional circumstance ruling applies, if not the application will be declined
 - Only the Headteacher (or the Deputy) has the power to approve leave of absence applications. When making the decision the protocols and criteria laid down in the school’s attendance policy must be followed.
 - Each academic year, schools inform parents/carers via a letter, newsletter or some other communication; that they may receive a Fixed Penalty Notice if their child has unauthorised absences in term time
- You will receive a written response from the Headteacher (or the Deputy) letting you know if your application has been approved
- If the holiday goes ahead after the application has been declined the absence will be recorded as unauthorised

With the introduction of the new National Framework for Penalty Notices, the following changes came into force on 19 August 2024.

Penalty Notices will be issued for Term time leave:

Penalty Notice fines will be issued for term time leave of 5 or more consecutive days.

10 Sessions of Unauthorised absence in a rolling 10 week period: A Penalty Notices may be considered when there have been 10 sessions of unauthorised absences in a 10 week period. However, we retain the discretion to issue a Penalty Notice before the threshold is met. For example, where parents are deliberately avoiding the national threshold by taking several term time holidays below the above thresholds.

Per Parent/Per Child

Penalty Notice fines will continue to be issued per parent per child. For example: 3 siblings absent for term time leave, would result in each parent receiving 3 separate fines.

First Offence

The first time a Penalty Notice is issued for term time leave or irregular school attendance the fine will be charged at:

£160 per parent, per child if paid within 28 days of the issue, reducing to £80 per parent, per child if paid within 21 days.

(Unpaid penalty notices may result in a parental prosecution)

Second Offence

Where it is deemed appropriate to issue a second penalty notice to the same parent for the same pupil within 3 years of the first penalty notice, for either term time leave or irregular attendance the second penalty notice will be charged at:

£160 if paid within 28 days. (Unpaid penalty notices may result in a parental prosecution)

Third Offence

On the third time that an offence is committed within 3 years of the first penalty notice for either a term time leave or irregular attendance a penalty notice will not be issued. The case may proceed to Parental Prosecution under the Single Justice Procedure. If found guilty of the offence of 'Failure to send a child to school' the Magistrates can impose a fine up to £1000 or legal proceedings under Section 444 (1a) can include a fine of up to £2500

Do you have a concern about a child?

Anyone can make a call if they have concerns about a child. This call can be made confidentially.

Cheshire East Consultation Service

The Cheshire East Consultation Service (ChECS) is the 'front door' for access to services, support and advice for children and their families.

General public

Phone ChECS on **0300 123 5012 (option 3)** Callers will be directed to a Unit Coordinator who will ask if the concerns are early help or safeguarding. You will then be directed to either Practitioner Support Officer for Early Help requests for support or a Social Worker (ChECS) for safeguarding concerns. The worker will gather your information and advise you of the next steps.

If you need to contact someone out of hours and you believe it to be an emergency that can't wait, please call our Emergency Duty Team on **0300 123 5022**.

If you have something that you would like putting in our newsletter please email it either to head@goostrey.cheshire.sch.uk or admin@goostrey.cheshire.sch.uk

It needs to be with us by 12.00 on Thursday and attached to your email on a WORD document so once approved we can easily cut and paste. Thank you

We always welcome pieces about Goostrey pupils and their achievements outside of school. I love to hear what our pupils are celebrating and achieving outside school so we can celebrate in the newsletter and assembly.

The responsibility to get permission for other people's children to be on photographs lies with the sender not with the school.

We will usually allow local events to be advertised in the newsletter, especially if we think they will be of interest to our pupils and their families.

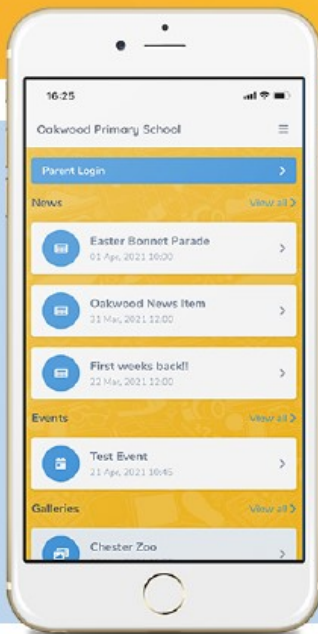
However we do not endorse or take responsibility for anything not directly organised by the school.

GUIDE TO OUR APP FOR PARENTS & CARERS



School Spider allows you to receive and return information directly to and from the school. Receive instant messages, complete surveys, book your parents' evenings and make payments.

Select your school to get started!



LOGGING IN

Once you have selected the school, you will see posts from the school website. Click parent dashboard to login or create an account. Create an account by pressing "create account" and enter your email address.

You must have your email linked with the school

TAKE A LOOK AROUND

See all action items on your dashboard

Click to respond or book for each child



Click the envelope to see your recent messages

Click these 3 lines to:
- Switch between areas
- Edit your profile
- Logout

DOWNLOAD NOW



Mid-Day Assistants Vacancies

We are seeking enthusiastic and caring people to join our team supervising our pupils over the lunchtime breaks.

Please contact our School Business Manager, Mrs J Schurer-Lewis on 01270 918940 or via e-mail; admin@goostrey.cheshire.sch.uk to request an application form and job description.

Goostrey Community Primary School is committed to the safeguarding and welfare of our pupils. Successful applicants will be required to have enhanced Disclosure and Barring Service checks, and attend Basic Safeguarding awareness training



Please click on the link below for full details of our after school provision and electronic copies of our registration and booking forms.

We are open Monday to Friday - 3pm to 6pm.

If you would like to see what the children have been up to this week, please follow us on Facebook or Twitter.

<https://www.goostreyallstars.co.uk/>



The school's official communication with families comes through the newsletter, website, class pages, messages through the app, email and occasionally paper letters. We do not have an official Facebook account for information.

Useful contacts and numbers.....

If there's any other information that you feel should be added to this page, as a weekly standing item, please let me know.

www.goostreypreschool.org.uk

Telephone: 07471 756720 - available during pre-school hours only.



Please click on the link below for full details of our after school provision and electronic copies of our registration and booking forms.

We are open Monday to Friday - 3pm to 6pm.

If you would like to see what the children have been up to this week, please follow us on Facebook or Twitter.

<https://www.goostreyallstars.co.uk/>



Before School Club

If you would like to enrol your child for Goostrey Before School Club, please either download a booking form from our website www.goostrey.cheshire.sch.uk or collect from the reception desk. The cost is £4.00 per session and the club operates on each school day, from 8.00 AM to 8.50 AM. Please note no food is served at this club.

The Chair of Governors and the Head teacher meet at least once a week. If you have anything you would like them to discuss / consider please let us know. We will always respond to you.

The web address for ordering school uniform is:
www.myschoolstyle.com/school/goostrey

Class pages, on the school website have lots of up to date information for your child's class. Please keep looking at these as they are updated every week for you.
Thank you

Compliments and Comments and Suggestions.

If you wish to give school general feedback about any aspect of school life, please email either Miss Atkins on head@goostrey.cheshire.sch.uk or class teachers, whose email addresses are on each class page on the website; <http://www.goostrey.cheshire.sch.uk/classes>