

01270 918940

[admin@goostrey.cheshire.sch.uk](mailto:admin@goostrey.cheshire.sch.uk)

[www.goostrey.cheshire.sch.uk](http://www.goostrey.cheshire.sch.uk)



21 03 25

***Dear Families,***

**WB March 24th  
WB March 24th  
2nd April  
4th April**

**Mother's Day Shop—page 4  
Parent evenings this week  
Y5 to Burwardsley 2 nights  
Hamper draw in classes**

Thank you to everyone who came last Sunday to help clear up our woodland—Mr and Mrs Worsley with Ralph, Mr and Mrs Hughes, Ryan Brown, Mr and Mrs Flint, Mr and Mrs Saxton, Mrs Cowell and Mrs Pacitto.

Please be considerate when parking at The Crown— parents are telling me that some cars are still parking by the benches and not in a bay. This makes it impossible to see the road / pavement and is therefore dangerous.. If you have family members who drop off / pick up and won't see this message please will you ask them to park in the designated bays.  
Thank you

**Before and after school clubs :** booking forms available on school website

[http://www.goostrey.cheshire.sch.uk/serve\\_file/48433](http://www.goostrey.cheshire.sch.uk/serve_file/48433)

**School uniform official supplier - other options are available, please see the school website for more information.**

[www.myschoolstyle.com/school/goostrey](http://www.myschoolstyle.com/school/goostrey)

On-line payment website address [www.cheshireeast.gov.uk/schoolshop](http://www.cheshireeast.gov.uk/schoolshop)

SENCo [mr.warhurst@goostrey.cheshire.sch.uk](mailto:mr.warhurst@goostrey.cheshire.sch.uk)

**Income Related Free School Meals:** [freeschoolmeals@cheshireeast.gov.uk](mailto:freeschoolmeals@cheshireeast.gov.uk) or visit website for further information

[https://www.cheshireeast.gov.uk/schools/school-meals/free\\_school\\_meals.aspx](https://www.cheshireeast.gov.uk/schools/school-meals/free_school_meals.aspx)

*Term dates for 24-25 and 25-26 are on our website*

**The school's official communication with families comes through the newsletter, website, class pages, messages through the app, email and occasionally paper letters.**

**The PTA have Facebook for information** Goostrey Community Primary School PTA

<https://www.facebook.com/GCPSPTA>

# FOOTBALL FESTIVAL

On Wednesday afternoon, seven girls from years 4, 5 and 6 took part in a football festival at Holmes Chapel Comprehensive School.

There were teams from five local primary schools in total so each team played four matches.

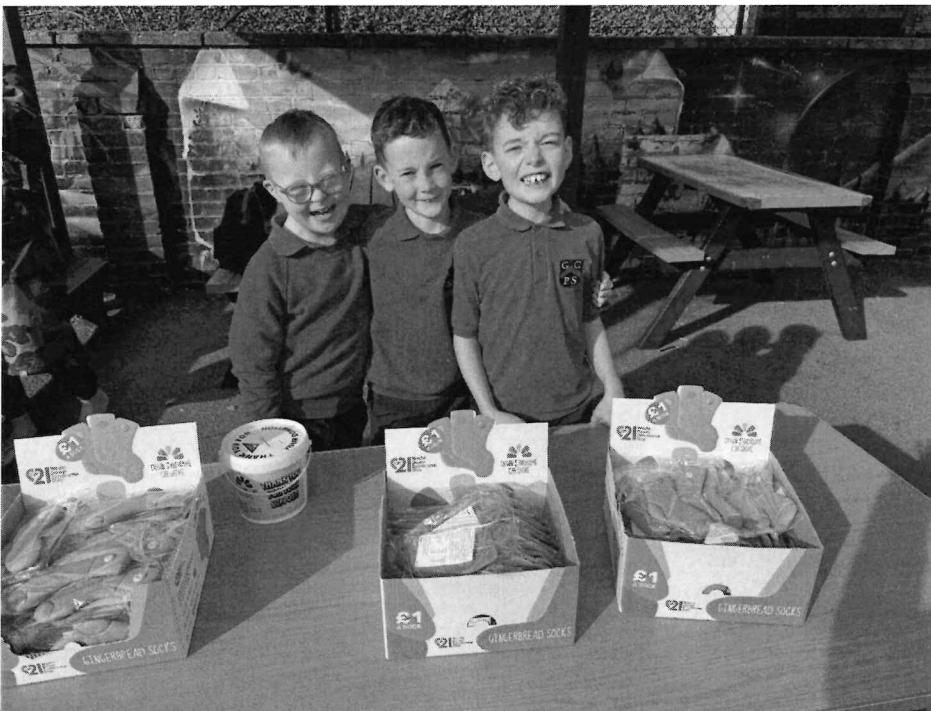
We only had seven girls participating so they all had to play every match. Each team had one session where they didn't play but our session was right at the end so the girls played four 12-minute matches in quick succession which tested their fitness and enthusiasm.

They were a terrific team. They showed good understanding of tactics, their passing was great and they used every member of their team. Having said that, the goalie didn't have a great deal to do as the girls were keen to attack and pushed up as much as possible. The team swapped places in each game so everyone had a chance to shine in different positions. Every girl did their very best with great results.

We drew two matches and won two (one was an 8-0 victory). Amazingly, our goalies kept a clean sheet with no goals scored against us. The overall result was that we won the festival!

This was a great event with other schools complimenting us not only on our skill but also on our sportsmanship and manners.

**Very well done to Nancy (captain), Tilly, Lucy M, Iris, Iona and Amber and Ruby - you were a pleasure to be with. Many thanks to parents and carers for bringing the girls and supporting them so well.**



Jasper, Leo and Felix selling the gingerbread socks this week.  
Thank you to everyone who supported this.

Well Done to **Erica Walker** in Year 2. Achieving Level 3 in swimming !



**William Jones** in Year 4 passed his Level 7 swimming award at the weekend



Well done to **Ciaran and Aoife** who, after lots of great work, both recently passed their swimming stages. Ciaran is looking forward to starting Stage 5 and Aoife is settling into Stage 4.

Goostrey Methodist Church  
We have Messy Church on 26th March, theme Easter,



Goostrey Community Primary School PTA

# Mother's Day

## Shop

Shopping days start  
**Monday 24th March**

**Gifts priced from £1 to £5**

Children will have the opportunity during the school day to visit our pop-up gift shop to buy gifts for the special people in their lives

Please bring money in a named envelope/purse, including the names of the gift recipients. Children will visit once with their class, so please ensure they bring their money on Monday 24th

Don't forget a bag to bring the gifts home!

Thank you for your support



# St. Luke's Children's Easter Workshop



Goostrey Junior School Hall  
10.00 am - 12 noon

## Good Friday 18th April

All children Age 4-11 welcome  
(Younger children welcome if  
accompanied by an adult)



# VANGUARD GAMES

## SPRING INTO ACTION



### FREE SPORTS EVENTS!

Free to attend sports events run in  
partnership with Crewe Alexandra in  
the Community.

Crewe—9th April & 30th May

Sandbach—10th April & 29th May

Alsager—11th April & 27th May

Congleton—16th April

Sessions are 10:00-16:00, free lunch included

Multi-Sport Activities

No room  
for racism

SAFER  
Cheshire East  
Partnership

Cheshire  
Constabulary



Premier League  
Kicks



Year 6 national tests and assessments will be ongoing throughout the summer term until the end of June 2025. It is vital that your child attends school for the whole of this period.

**YEAR 6 SATS ARE WB 12TH MAY AND THEIR WRITING ASSESSMENTS CONTINUE UNTIL THE END OF JUNE**

## TAKING CHILDREN ON HOLIDAY DURING TERM TIME

### A guide for parents and carers

#### Frequently asked questions

**Am I entitled to take my child out of school for a family holiday?**

**No.** Parents have a legal duty to ensure that their children attend school or the alternative provision on a regular basis

**New regulations came into force on 19<sup>th</sup> August 2024:**

The School Attendance (Pupil Registration) (England) Regulations 2024

The Education Act 1996 makes it a criminal offence for a parent to “fail to secure their child’s regular attendance at the school”

The School Attendance (Pupil Registration) (England) Regulations 2024 make clear that **Head Teachers may not grant any leave of absence (holiday) during term time unless there are exceptional circumstances**

The Head Teacher and Governing Board will determine what the exceptional circumstances are

**If we decide to take a holiday during term time what should we do?**

The parent/carer with whom the child resides must apply in writing to the school

The letter/application must explain the exceptional circumstance surrounding the request for the leave of absence

**What will the school do then?**

The Head Teacher will determine whether the exceptional circumstance ruling applies, if not the application will be declined

Only the Headteacher (or the Deputy) has the power to approve leave of absence applications. When making the decision the protocols and criteria laid down in the school’s attendance policy must be followed.

Each academic year, schools inform parents/carers via a letter, newsletter or some other communication; that they may receive a Fixed Penalty Notice if their child has unauthorised absences in term time

You will receive a written response from the Headteacher (or the Deputy) letting you know if your application has been approved

If the holiday goes ahead after the application has been declined the absence will be recorded as unauthorised

With the introduction of the new National Framework for Penalty Notices, the following changes came into force on 19th August 2024.

**Penalty Notices will be issued for Term time leave:**

Penalty Notice fines will be issued for term time leave of 5 or more consecutive days.

**10 Sessions of Unauthorised absence in a rolling 10 week period:** A Penalty Notices may be considered when there have been 10 sessions of unauthorised absences in a 10 week period. However, we retain the discretion to issue a Penalty Notice before the threshold is met. For example, where parents are deliberately avoiding the national threshold by taking several term time holidays below the above thresholds.

**Per Parent/Per Child**

Penalty Notice fines will continue to be issued per parent per child. For example: 3 siblings absent for term time leave, would result in each parent receiving 3 separate fines.

**First Offence**

The first time a Penalty Notice is issued for term time leave or irregular school attendance the fine will be charged at:

£160 per parent, per child if paid within 28 days of the issue, reducing to £80 per parent, per child if paid within 21 days.

(Unpaid penalty notices may result in a parental prosecution)

**Second Offence**

Where it is deemed appropriate to issue a second penalty notice to the same parent for the same pupil within 3 years of the first penalty notice, for either term time leave or irregular attendance the second penalty notice will be charged at:

£160 if paid within 28 days. (Unpaid penalty notices may result in a parental prosecution)

**Third Offence**

On the third time that an offence is committed within 3 years of the first penalty notice for either a term time leave or irregular attendance a penalty notice will not be issued. The case may proceed to Parental Prosecution under the Single Justice Procedure. If found guilty of the offence of 'Failure to send a child to school' the Magistrates can impose a fine up to £1000 or legal proceedings under Section 444 (1a) can include a fine of up to £2500

## Do you have a concern about a child?

Anyone can make a call if they have concerns about a child. This call can be made confidentially.

Cheshire East Consultation Service

The Cheshire East Consultation Service (ChECS) is the 'front door' for access to services, support and advice for children and their families.

### General public

Phone ChECS on **0300 123 5012 (option 3)** Callers will be directed to a Unit Coordinator who will ask if the concerns are early help or safeguarding. You will then be directed to either Practitioner Support Officer for Early Help requests for support or a Social Worker ( ChECS ) for safeguarding concerns. The worker will gather your information and advise you of the next steps.

If you need to contact someone out of hours and you believe it to be an emergency that can't wait, please call our Emergency Duty Team on **0300 123 5022**.

**If you have something that you would like putting in our newsletter please email it either to [head@goostrey.cheshire.sch.uk](mailto:head@goostrey.cheshire.sch.uk) or [admin@goostrey.cheshire.sch.uk](mailto:admin@goostrey.cheshire.sch.uk)**

**It needs to be with us by 12.00 on Thursday and attached to your email on a WORD document so once approved we can easily cut and paste. Thank you**

**We always welcome pieces about Goostrey pupils and their achievements outside of school. I love to hear what our pupils are celebrating and achieving outside school so we can celebrate in the newsletter and assembly.**

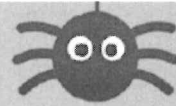
**The responsibility to get permission for other people's children to be on photographs lies with the sender not with the school.**

**We will usually allow local events to be advertised in the newsletter, especially if we think they will be of interest to our pupils and their families.**

**However we do not endorse or take responsibility for anything not directly organised by the school.**

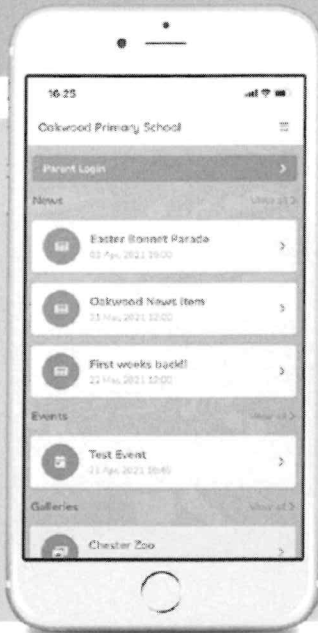


# GUIDE TO OUR APP FOR PARENTS & CARERS



School Spider allows you to receive and return information directly to and from the school. Receive instant messages, complete surveys, book your parents' evenings and make payments.

Select your school to get started!



## LOGGING IN

Once you have selected the school, you will see posts from the school website. Click parent dashboard to login or create an account. Create an account by pressing "create account" and enter your email address. You must have your email linked with the school

## TAKE A LOOK AROUND

See all action items on your dashboard

Click to respond or book for each child



Click the envelope to see your recent messages

Click these 3 lines to:  
- Switch between areas  
- Edit your profile  
- Logout

DOWNLOAD NOW





Keep up to date with PTA news and events on our social media pages:



goostrey\_primary\_school\_pta



Goostrey Community Primary School PTA

<https://www.facebook.com/GCPSPTA>



Please click on the link below for full details of our after school provision and electronic copies of our registration and booking forms.

We are open Monday to Friday - 3pm to 6pm.

If you would like to see what the children have been up to this week, please follow us on Facebook or Twitter.

<https://www.goostreyallstars.co.uk/>



**The school's official communication with families comes through the newsletter, website, class pages, messages through the app, email and occasionally paper letters. We do not have an official Facebook account for information.**

## Useful contacts and numbers.....

If there's any other information that you feel should be added to this page, as a weekly standing item, please let me know.

[www.goostreypreschool.org.uk](http://www.goostreypreschool.org.uk)

**Telephone: 07471 756720** -  
available during pre-school hours  
only.



Please click on the link below for full details of our after school provision and electronic copies of our registration and booking forms.

We are open Monday to Friday - 3pm to 6pm.

If you would like to see what the children have been up to this week, please follow us on Facebook or Twitter.

<https://www.goostreyallstars.co.uk/>



### Before School Club

If you would like to enrol your child for Goostrey Before School Club, please either download a booking form from our website [www.goostrey.cheshire.sch.uk](http://www.goostrey.cheshire.sch.uk) or collect from the reception desk. The cost is £4.00 per session and the club operates on each school day, from 8.00 AM to 8.50 AM. Please note no food is served at this club.

The Chair of Governors and the Head teacher meet at least once a week. If you have anything you would like them to discuss / consider please let us know. We will always respond to you.

The web address for ordering school uniform is:  
[www.myschoolstyle.com/school/goostrey](http://www.myschoolstyle.com/school/goostrey)

Class pages, on the school website have lots of up to date information for your child's class. Please keep looking at these as they are updated every week for you.  
Thank you

### Compliments and Comments and Suggestions.

If you wish to give school general feedback about any aspect of school life, please email either Miss Atkins on [head@goostrey.cheshire.sch.uk](mailto:head@goostrey.cheshire.sch.uk) or class teachers, whose email addresses are on each class page on the website; <http://www.goostrey.cheshire.sch.uk/classes>