



01270 685658

admin@goostrey.cheshire.sch.uk

www.goostrey.cheshire.sch.uk

@goostreyprimary



Newsletter 19th June 2020

Dear Parents,

This week our reception class were welcomed back in to school. Seventeen children arrived on Monday morning and we have been delighted with how they have settled and got used to their new routines. Year 1 are now able to return from next Monday and we look forward to seeing them again too— we have 19 families accepting the place.

PLEASE UNDERSTAND THAT WE HAVE TO STAGGER THE START TIMES FOR THE RECEPTION AND YEAR 1 CLASSES. YEAR 1 WILL START AT 9 00 AND RECEPTION AT 9.15. WE WILL NOT BE ABLE TO LET ANY FAMILIES OF RECEPTION CHILDREN IN BEFORE 9.15 IF YOU ARE EARLY PLEASE WAIT IN YOUR CARS. YEAR 1 PARENTS—PLEASE WILL YOU LEAVE THE SCHOOL GROUNDS AS QUICKLY AS POSSIBLE AFTER YOUR CHILD HAS BEEN CALLED IN TO THEIR CLASS TO ALLOW FOR SOCIAL DISTANCING WITH THE NEXT CLASS ARRIVING. THANK YOU

The newsletter is showcasing, once again, the children's work from home. Thank you to everyone who has sent something in.

I hope you are keeping safe and well and thank you for all your messages of support—we know how challenging this time can be for families and we want to help if we can.

Miss Atkins—a head teacher who is very proud of Goostrey School and everyone associated with it.

The school's official communication with families comes through the newsletter, website, class pages, messages through the app, email and occasionally paper letters. We do not have an official Facebook account for information.

Holiday dates are on the school website.

SENCo: mrs.freeman@goostrey.cheshire.sch.uk .

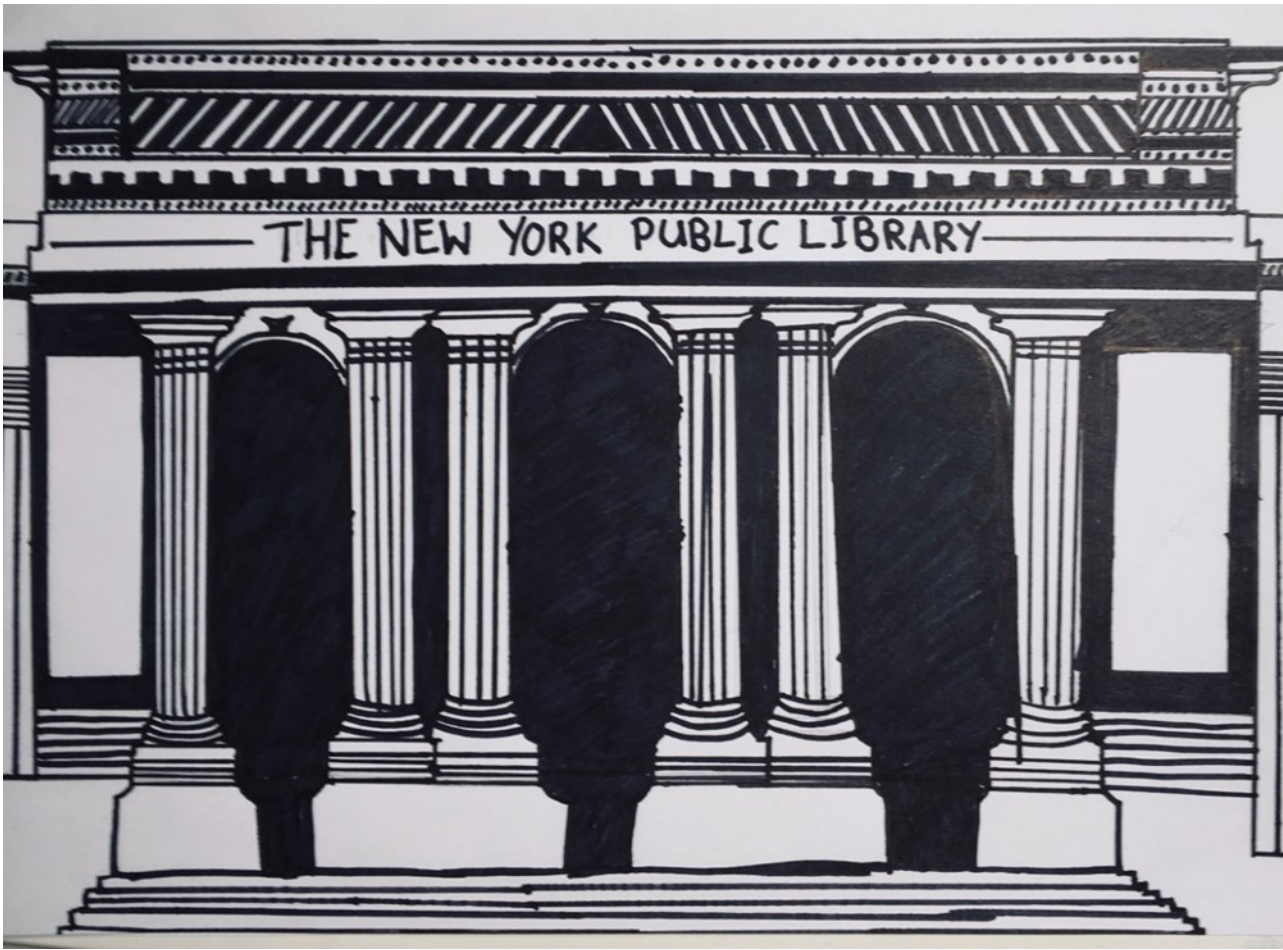
Useful information

Before school club: booking form available on school website http://www.goostrey.cheshire.sch.uk/serve_file/48433

Superkids after school club: enrolment - 0161 474 7743 / contact during club - 07746 559400

School uniform: www.myschoolstyle.com/school/goostrey

On-line payment website address www.cheshireeast.gov.uk/schoolshop



New York Library by Eva

Flatiron Building by Benjamin Fitzwalter



Introduction and Location Where is It

The Flatiron Building is located at intersection of Fifth Avenue and Broadway, it is a distinctive triangular shape, due to its unusual shape it is one of the most visited sites in Manhattan. It can be reached via 23 Street Station or a walk down Fifth Avenue.



Construction:

This unusual piece of architecture was one of only two skyscrapers of its time. It was designed by Daniel Burnham who designed in the Beaux Arts style , featuring French and Italian Renaissance. It was built around a steel skeleton.

Design:

This landmark stands 86.9 meters high and is 22 storeys tall. Its beautiful facade is covered with a mixture of limestone and terracotta. If you look carefully up at the building you will notice the gargoyles of Medusa which shows the Greek influence.



In the beginning this building received much criticism and was called a "Stingy Piece of Pie" its now one of the most loved buildings.

Purpose

Ever since the Flatiron Building was erected it has brimmed with tenants most of which were small business. Of the twenty two floors inhabit small businesses and apartments.

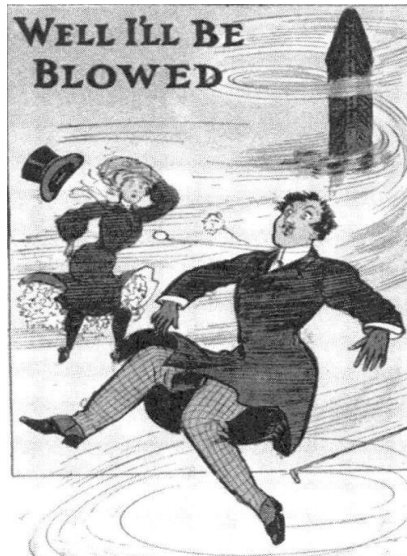
Famous Inhabitants

This classic New York skyscraper was originally born for commercial use. In 1959 Saint Martins Press and McMillan Publishers took over 21 offices however 117years later these offices are vacant.

Additional Facts

There are three historical facts which make this structure unique, its triangular shape which looks like the bow of a ship rising out of the ground, resembling the Titanic!

Due to the shape and location of the building it causes high gusts of wind to whirl around the building. This caused ladies skirts to lift up, hence the saying '23 Skiddoo' which means scam. This was because men used to loiter around in the hope of seeing ladies ankles or even legs!



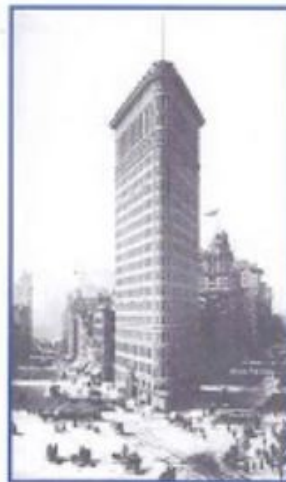
It was designated a New York City landmark in 1966 the building was one of a kind due to its hydraulic elevators by Otis

EARLY SKYSCRAPERS ELEVATORS or LIFTS

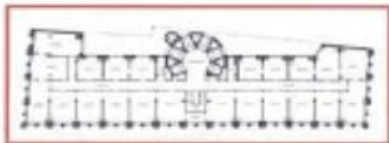
Without the development of the lift the building of skyscraper office blocks in New York would have been impracticable. The following examples provide exterior views, plans and lift lobby photographs of some of the well known, and not so well known, early skyscrapers: Havemeyer [1893]; Flatiron [1902]; Singer [1908]; Woolworth [1913]; Municipal [1914]; Equitable [1915]; Chrysler [1930]; Empire State [1931] and RCA [1931].



Havemeyer Building
15 storeys



Flatiron Building
21 storeys, 307 feet high



Havemeyer Floor Plan
6 Otis passenger & 1 goods
hydraulic elevators

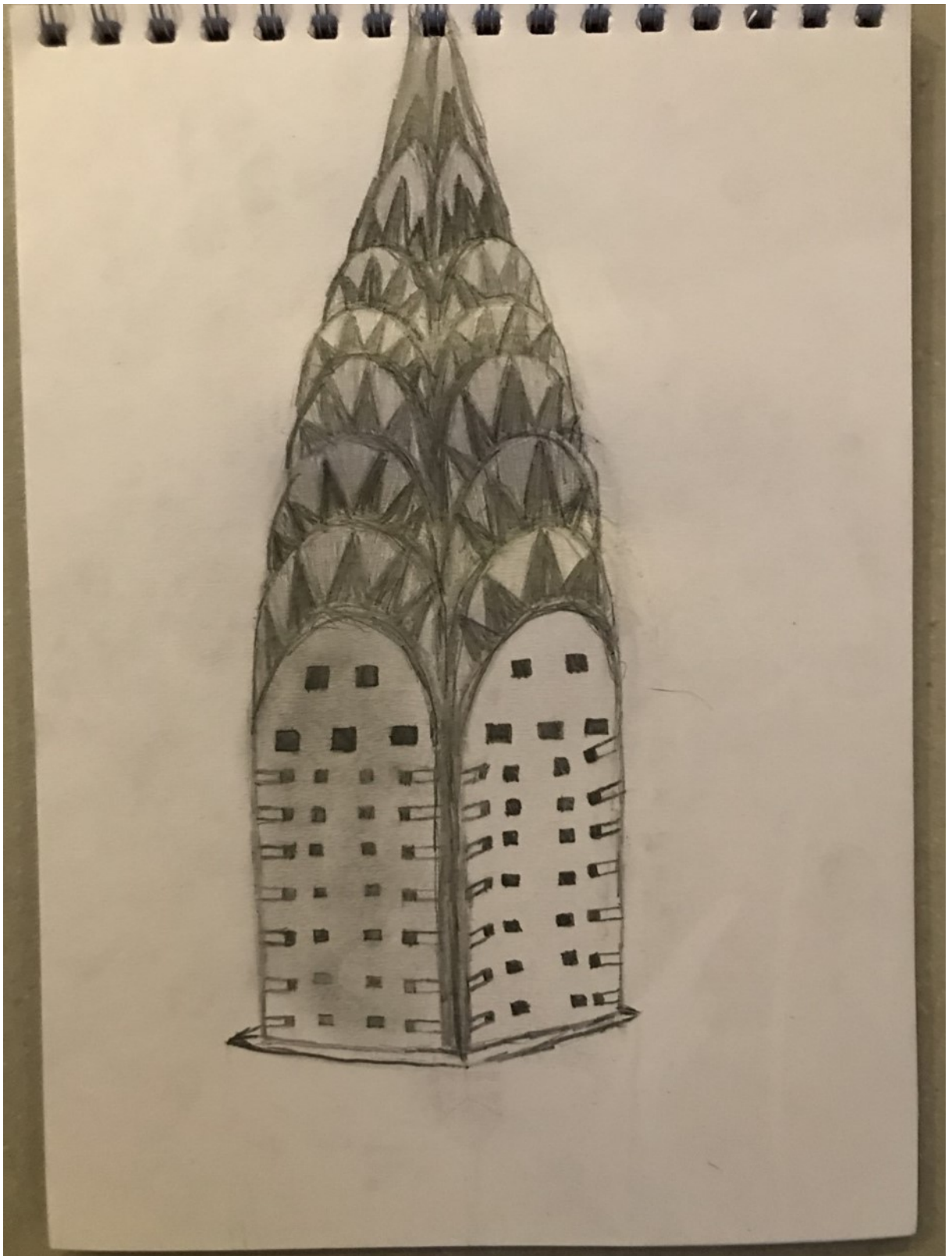


Flatiron Typical Floor
6 elevators

Glossary of specific vocabulary

23 Skiddoo
Erected
Hydraulic
Commercial
Structure
Unique

Chrysler building by Holly



The Empire State Building

Where is it?

The Empire State Building stands high as one of the highest buildings in the U.S.A. Its on 350 avenue in New York. It has 73 elevators and 102 floors! It also has 6514 windows, and is 443179.2 mm high(or 443.1792 metres high) and its upper tower is 202ft.

Construction

The main architect of this building was William Frederick lamb. The Empire state buildings upper tower was used for mooring airships. They started building this tower on March 17, 1930 and finished in 1931. The Empire State Building was the first ever building to have over 100 floors.

Design

The Empire State Building was the tallest building in the world from 1931-1972. 3.6 million people visit The Empire State Building a year. It cost \$40,940,900 to build The Empire State Building.

Some facts about The Empire state Building:

A B-12 bomber crashed into The Empire State building.

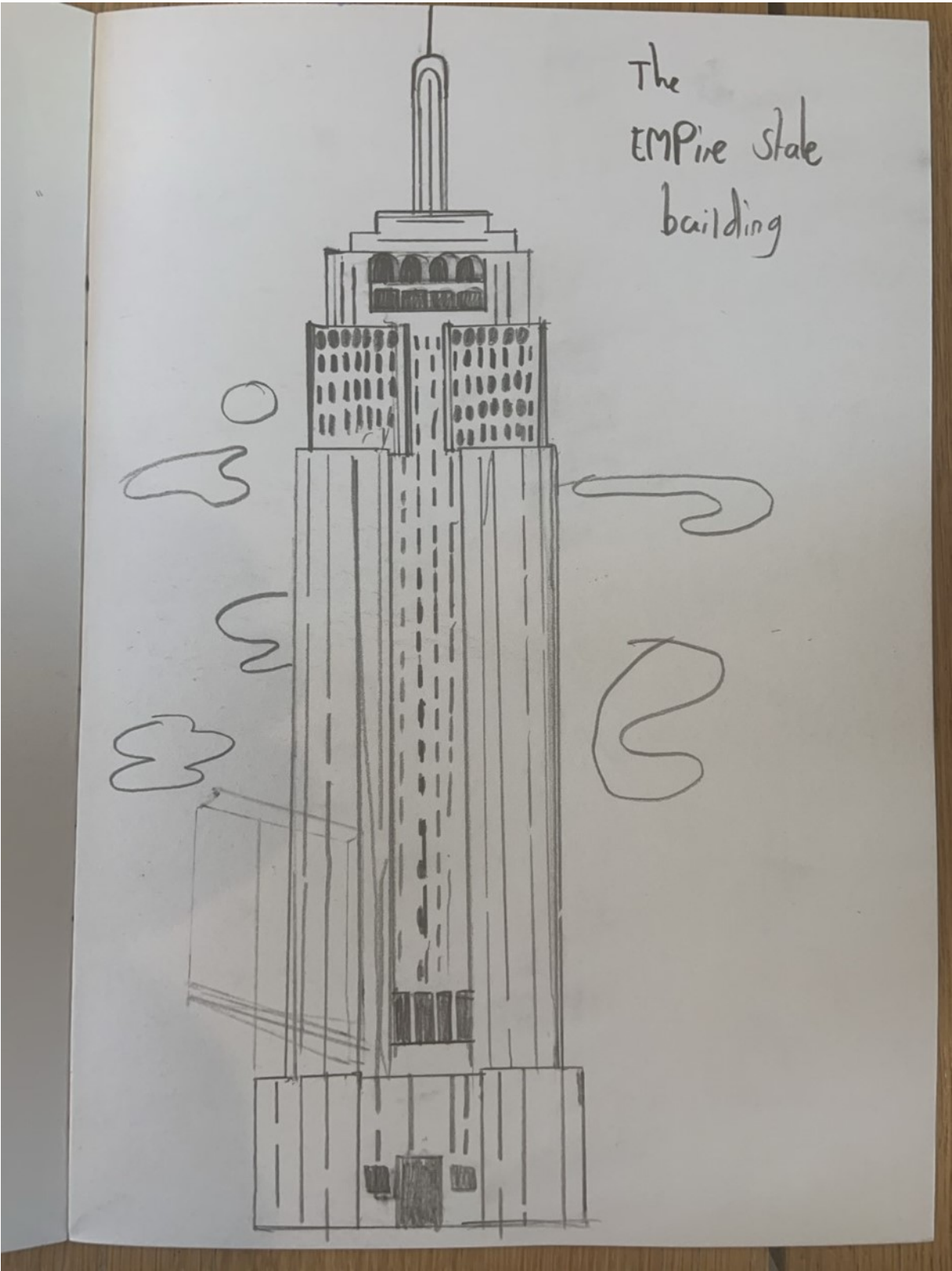
By 1976 50 million people had visited the observation decks.

This skyscraper was cleaned for the first time in 1962 and it took 30 people 6 months to wash all of the building.

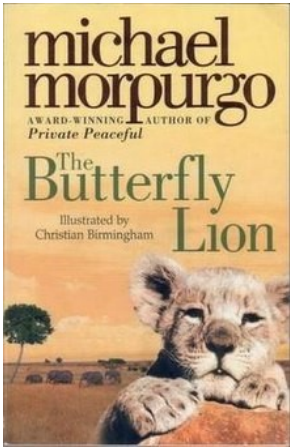
Why they made it

They made it because it was a race to get the highest building in the world. John Jacob built the building against several people to build the highest skyscraper in the world his main opponent was Walter Chrysler.

By Charlie



Remote Learning In Year 4



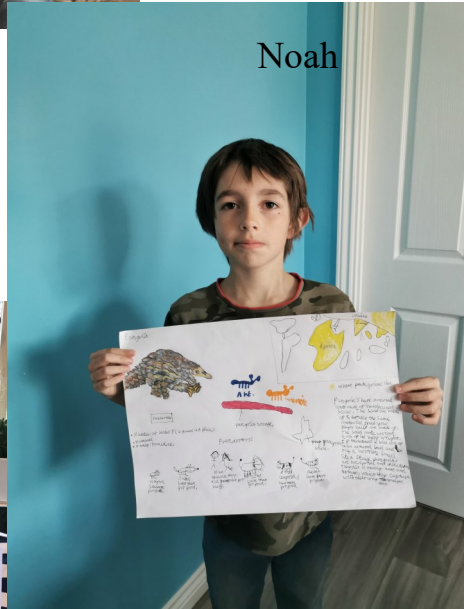
Extreme reading with Noah



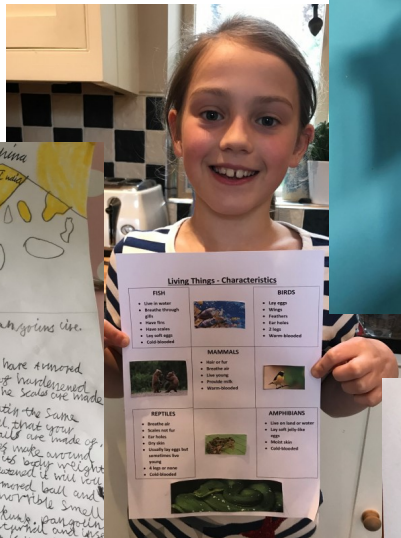
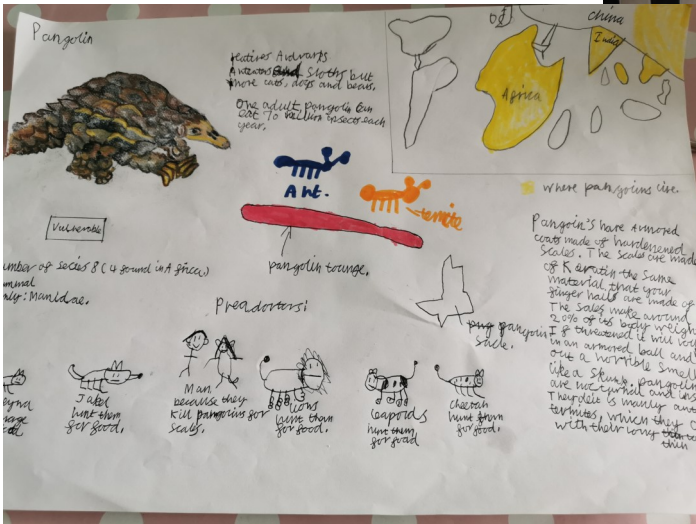
Year 4 have gone animal bonkers!

Year 4 look at animals and their characteristics in science. As part

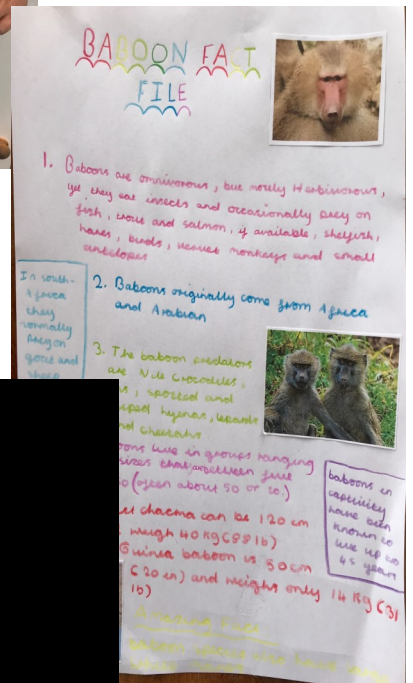
of the work on our class novel, the children researched different animals found on the African veld.



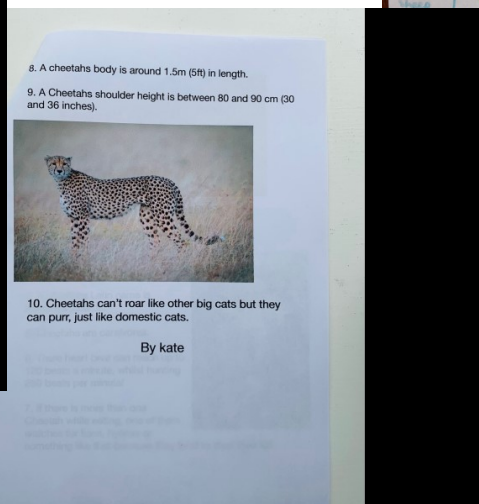
Noah



Brianna



Kate

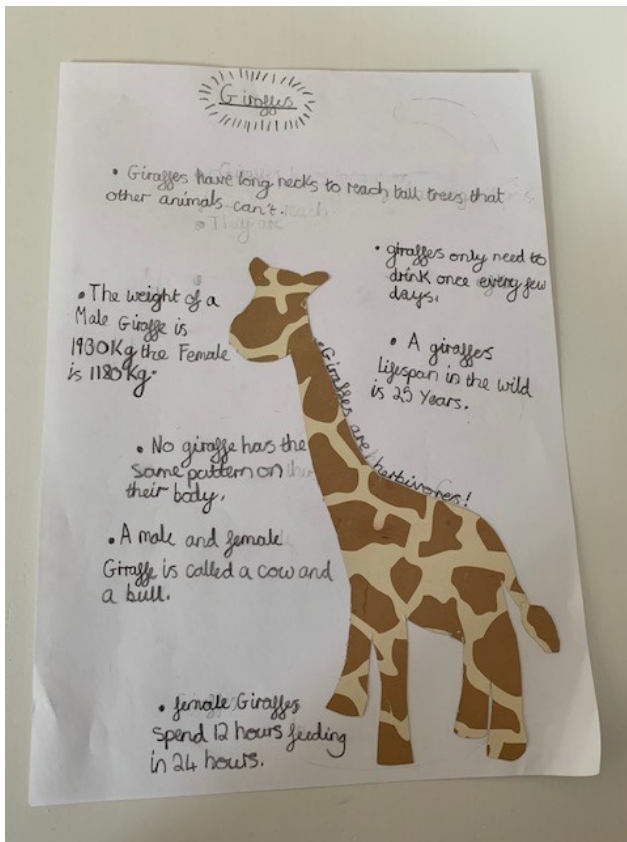


By Kate

Isla K

More animals work from Year 4

Alfie S



Alfie S's work on collective nouns. Here is his flock of sheep.

Brianna

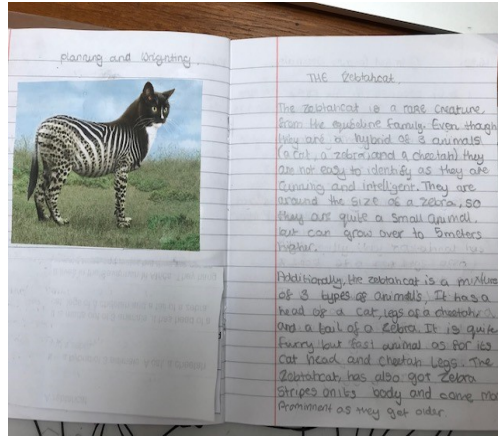
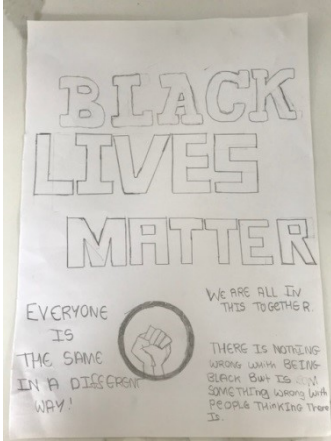
Living Things - Characteristics

FISH <ul style="list-style-type: none"> Live in water Breathe through gills Have fins Have scales Lay soft eggs Cold-blooded 		BIRDS <ul style="list-style-type: none"> Lay eggs Wings Feathers Ear holes 2 legs Warm-blooded
	MAMMALS <ul style="list-style-type: none"> Hair or fur Breathe air Live young Provide milk Warm-blooded 	
REPTILES <ul style="list-style-type: none"> Breathe air Scales not fur Ear holes Dry skin Usually lay eggs but sometimes live young 4 legs or none Cold-blooded 		AMPHIBIANS <ul style="list-style-type: none"> Live on land or water Lay soft jelly-like eggs Moist skin Cold-blooded

This Week's Home Learning in Year 5

This week we have...

- Explored the issue of pocket money.
- Looked at how to write a 'wishing' story.
- Done lots of maths work.
- Research the Amazon River and Amazon Rainforest.
- Looked at why rainforest wildlife is becoming endangered.

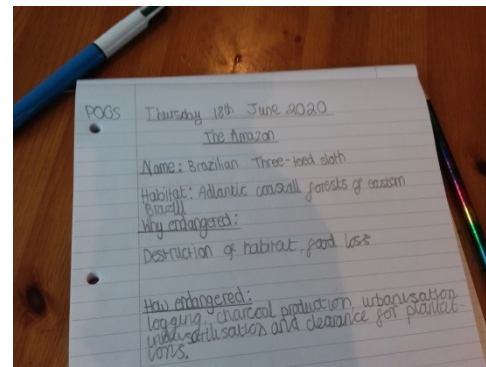
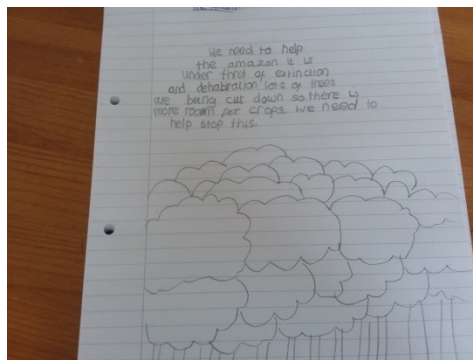


Eleanor's wonderful Black Lives Matter poster & information text

Ella's brilliant waterfall artwork



Joe and Frank both sent in great presentations about the Amazon River



Hannah's brilliant work on the Amazon Rainforest

Please see below for recommendations of resources and tips to support parents during the current COVID-19 outbreak.

CEOP is a well known and valuable child exploitation resource bank. Given current circumstances they are releasing a new activity pack every 2 weeks to support parents to deliver online safety activities with children at a time when they will be spending more time online at home.

<https://www.thinkuknow.co.uk/parents/Support-tools/home-activity-worksheets/>

- At present many parents will be juggling childcare with working from home. Top tips for parents working from home:

<https://www.barnardos.org.uk/blog/tips-parents-working-home-barnardos-colleagues>

- The NSPCC has created an information and advice resource for parents/carers of young people with anxiety about Coronavirus.

<https://www.nspcc.org.uk/keeping-children-safe/childrens-mental-health/depression-anxiety-mental-health>

- Professionals, parents and young people can be directed to the Young Addaction Pan Cheshire social media pages for daily updates, resources, tips and support

<https://www.facebook.com/Pan-Cheshire-Missing-and-Child-Exploitation-Service-1039465136264241>

<https://twitter.com/PanCheshireMFH>

The NSPCC has created an online Hub providing advice and support for parents and carers during the coronavirus outbreak. Content includes: information on keeping children safe from abuse; tips and advice to help parents working from home; and ways to talk to a child who is anxious or worried about coronavirus.

Visit the Hub: [Coronavirus \(COVID-19\) advice and support for parents and carers](#)

Mental Health Helpline - 0300 303 3972

Local NHS Trust, Cheshire and Wirral Partnership (CWP), has launched a new mental health helpline for residents of Cheshire West, Cheshire East and Wirral.

Open 24 hours a day, seven-days a week, it is open to people of all ages including children and young people who need urgent mental health support.

What to do if you need urgent mental health help:

- Please call **0300 303 3972** and our dedicated local NHS staff will support you to access the help you need;
- The helpline is open **24 hours a day, seven days a week** and is open to people of all ages – including children and young people;
- The helpline is now the **first port of call for mental health help** – it is operated by people in your local area who will know how best to support you. If you call NHS111 you may have to wait longer for help and will be re-directed to this local service – so call 0300 303 3972;
- Please note, A&E and 999 are **not the best places** to get help for the majority of mental health problems – **call 0300 303 3972** to be directed to the best local service to support you;
- You should still call 999 or go to A&E if you have an **immediate, life-threatening emergency** requiring mental or physical health assistance;

For non-urgent help and **general wellbeing advice**, the CWP website contains information and links to resources to support people with anxiety, low mood, and worries relating to the current Covid-19 pandemic www.cwp.nhs.uk

For **children and young people** there is also a dedicated website MyMind.org.uk

Useful contacts and numbers.....

If there's any other information that you feel should be added to this page, as a weekly standing item, please let me know.

www.goostreypreschool.org.uk

Telephone: 07471 756720 - available during pre-school hours only.

SUPERKIDS

If you want to enrol your child into SUPERKIDS, our after school club. then please ring the Superkids office on 0161 474 7743 or you can come to the Junior hall, between 3.30 and 6pm. This number can be used for registration details, bookings adding people to Vizilogger etc.

Superkids also have a mobile phone number you can contact to advise about your child's attendance at the club or if you are running late to collect your child.

The mobile phone number is 07746 559400

We will provide an update on when this provision will re-open in due course.

Before School Club

If you would like to enrol your child for Goostrey Before School Club, please either download a booking form from our website www.goostrey.cheshire.sch.uk or collect from the reception desk. The cost is £3.00 per session and the club operates on each school day, from 8.00 AM to 8.55 AM. Please note no food is served at this club.

We are hoping this provision will be able to re-open in September.

The Chair of Governors and the Head teacher meet at least once a week. If you have anything you would like them to discuss / consider please let us know. We will always respond to you.

The web address for ordering school uniform is:
www.myschoolstyle.com/school/goostrey

Class pages, on the school website have lots of up to date information for your child's class. Please keep looking at these as they are updated every week for you. Thank you

Compliments and Comments and Suggestions. Name:

.....

Please use this slip if you wish to give school general feedback about any aspect of school life. It is not essential to provide your name but will be necessary if you want a response. Please return to Mrs Carroll or the class teacher. Alternatively you are always welcome to e mail staff or pop in to see them—school operates an open door policy.