



Dear Parents,

We have one more week in school before the summer break. We are currently planning for the full return of all our children from September as we read through and understand all of the guidance and expectations from Cheshire East and the DfE . We will then review and update the risk assessment for our setting ready for the new school year. Once we have finalised the details around the safe return of our pupils we will share this information with you, we intend to get this to you as soon as possible—if not by next Friday definitely by the end of July.

Staff will be in school, at varying times during the summer break. Mrs Schurer-Lewis and I will be in most of WB 20th and 27th July and again in the last week of August. We want to assure you that we are here if you need us for most of the summer break. However, there will be a time when we will not be available in August and emails will not be answered immediately during this time.

I am looking forward to the new school year—yes it will be different and we will have to operate in a more restricted way but at least we will be one school again—learning and achieving together.

Miss Atkins—a head teacher who is very proud of Goostrey School and everyone associated with it.

The school's official communication with families comes through the newsletter, website, class pages, messages through the app, email and occasionally paper letters. We do not have an official Facebook account for information.

Holiday dates are on the school website.

SENCo: mrs.freeman@goostrey.cheshire.sch.uk .

Useful information

Before school club: booking form available on school website http://www.goostrey.cheshire.sch.uk/serve_file/48433

Superkids after school club: enrolment - 0161 474 7743 / contact during club - 07746 559400

School uniform: www.myschoolstyle.com/school/goostrey

On-line payment website address www.cheshireeast.gov.uk/schoolshop



These beautiful photos were sent to me by one of our parents—
Rose Day Rose Bud and attendants.

This parent also wrote:

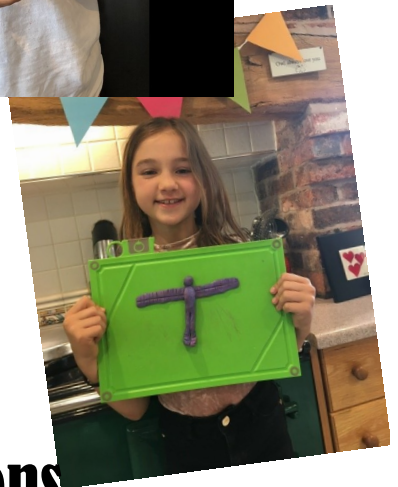
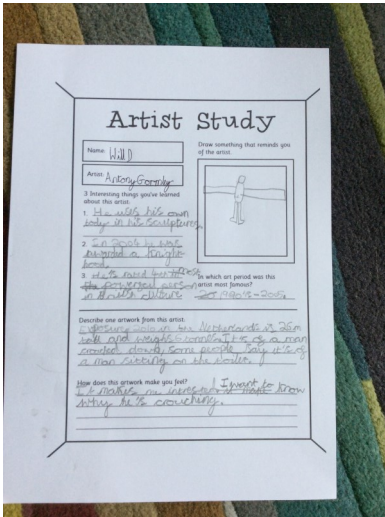
They had a wonderful day and it was lovely to see the village
come together, hanging bunting and lining the streets.

We were very lucky to be part of the tradition albeit on a smaller
scale.

There are spaces available for flute and recorder lessons at school with Mrs Goode from September. An experienced teacher, ABRSM examiner and performer in the UK and internationally, Mrs Goode comes into school each week to give lessons during term time. Please contact at zoechap@hotmail.com for more information or to arrange a trial lesson at school.

Remote Learning In Year 4

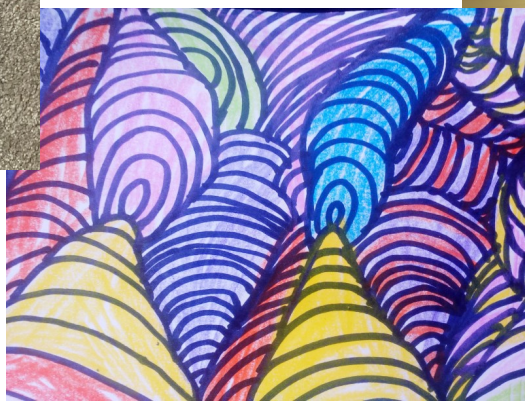
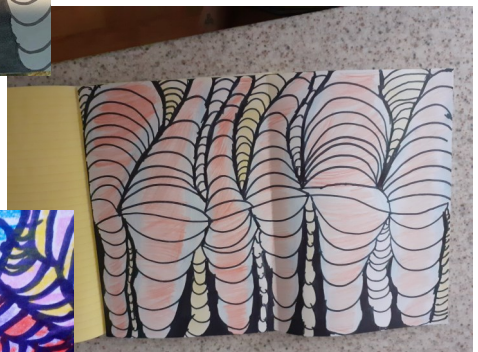
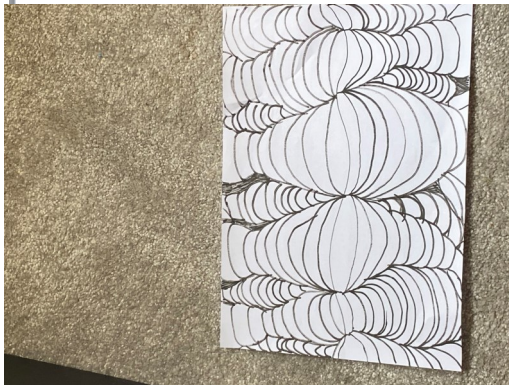
Learning about the sculptor Antony Gormley



ANTONY GORMLEY FACTS

1. Full Name: Sir Antony Mark David Gormley
2. Gormley was born on the 30 August 1950 and is a British sculptor.
3. In 2008 Gormley was ranked 4th on the 100 most powerful people in British sculpture.
4. Antony's work includes the Angel Of The North, a public sculpture in Gateshead which was commissioned in 1994 and erected (put together or constructed) in February, Another Place near Crosby beach in Liverpool was his making.
5. Gormley's family live in Dewsbury Moor, West Yorkshire.
6. He once attended Ampleforth College, a Boarding school in Yorkshire.
7. He also travelled to Sri Lanka to learn about Buddhism. He travelled there in in the years of 1971-1974.
8. He began his career along with a solo exhibition. It was at Whitechapel Art Gallery in 1981.
9. He described his own works to be materialised for as long as people are alive.
10. In 2006 when he conducted installation for 180,000 small clay figures.

Optical Illusions Work




Remote Learning In Year 4

European Fact Files

Rory Emmett

The Pyrenees Mountain Range




Rory Emmett

How to Get To the Pyrenees Mountain Range

I decided to show you the Pyrenees Mountain Range in Europe because it is one of the most beautiful mountain ranges in the world.

Google Maps Helios Chapel to Pyrenees Drive: 1,138 miles, 18 h 55 min



- Get on M5 from M25/Black Road
- Continue on M5 to M40/M25 and M25 to M10/Leicester Road in East, Take M11A from M10
- Follow the A143 to the Pyrenees
- Follow the A143 to the Pyrenees
- Follow the A143 to the Pyrenees
- Follow the A143 to the Pyrenees
- Follow the A143 to the Pyrenees
- Follow the A143 to the Pyrenees


YOU HAVE REACHED THE PYRENEES MOUNTAIN RANGE IN THE WEST. THESE HIGHEST MOUNTAINS IN EUROPE. FORESTS COVER THE MOUNTAIN SIDES IN THE WEST. THESE TREES AND OTHER PLANTS GROW IN THE WEST, WHICH IS MULTITUDE.

TOP TEN FACTS ABOUT EUROPE

1. The population is 740 million
2. It is made of 46 countries
3. It is the second smallest continent
4. The Volga river is the longest in Europe and the world in Russia
5. The largest country is Russia
6. The smallest country is Vatican city
7. Mountain ranges include Alps, Pyrenees, and Carpathian
8. Some of the famous landmarks are the Eiffel Tower, the Roman Colosseum, the Leaning Tower of Pisa and the Acropolis and Parthenon
9. The largest lake in Europe is Lake Ladoga in Russia and it is 136 miles long and 219 km
10. There are more than 200 different languages spoken
11. There are 60 active volcanoes throughout Europe and the 2 most dangerous ones are in Italy
12. 20% of Europe's land is mountains

There's 44 countries in Europe
 At 5462 metres high mount Elbrus is the highest mountain in Europe
 The Eiffel Tower is the most visited tourist attraction in Europe!
 The biggest building in Europe is the Lakhota centre in saint Petersburg Russia
 At 12,262 metres below sea level is the kola superdeep borehole in Russia this is not only the deepest point in Europe it is also the deepest point in the world 🌍!
 Europe is famous for the European Union
 Europe has a lot of famous food such as the German sausage, the Italian pizza and the french fries!
 Vatican City/holy see is the smallest country in Europe and the world
 The Ural Mountains separate Europe and Asia
 A strange thing about Italy is that it is actually looking like a boot from satellite 🌍!

SHORT FACTFILE



Map of the Pyrenees

- The Pyrenees mountain chain forms a high, rugged barrier between France and Spain
- The mountains are 270 miles (430 km) long from the Atlantic Ocean in the west to the Mediterranean in the east.
- Called Aneto and is 3404 metres high (11168ft)

See people live at the Pyrenees' highest parts. However, the tiny country of Andorra's found among peaks near the western end of the chain.

Farmers and ranchers tend crops and raise animals in the valleys and on the slopes of the Pyrenees. They raise wheat, corn, potatoes, fruit, and cattle, sheep, and goats. Animals include beef, cattle, sheep, and goats. Visitors come to the mountains for their hot springs, as well as for winter sports, hunting, fishing, and hiking.

Throughout history the Pyrenees have separated Spain from the rest of Europe. The mountains made it difficult to travel between the two by land. No one could go across the Pyrenees until the 1950s, and this is because the Pyrenees became a barrier. They also developed with tourists which causes a great deal of traffic from Spain to only a short stretch of the Pyrenees range.

We say Pyrenees but how do they say it in different countries?
 This is how:

Recreational Activities

The beautiful mountains mean that there are lots of outdoor activities to take part in. Having ski resorts on both sides of the Pyrenees.

In your spare time you could:

- Go Skiing
- Go mountaineering




Wildlife in the Pyrenees

The Pyrenees are home to a variety of mammals, with many native species (similar to the Iberian lynx) in the Pyrenees' mountains. The Iberian lynx is a species of lynx that lives in the Pyrenees. The Iberian lynx is a species of lynx that lives in the Pyrenees. The Iberian lynx is a species of lynx that lives in the Pyrenees.

The Iberian lynx is a species of lynx that lives in the Pyrenees. The Iberian lynx is a species of lynx that lives in the Pyrenees. The Iberian lynx is a species of lynx that lives in the Pyrenees.

The Iberian lynx is a species of lynx that lives in the Pyrenees. The Iberian lynx is a species of lynx that lives in the Pyrenees. The Iberian lynx is a species of lynx that lives in the Pyrenees.

10 Fun Facts About Europe

Rory Emmett

1. Barcelona's Sagrada Família is taking longer to build than the Pyramids. Barcelona aims to have it completed by 2026, the 100th anniversary of Gaudí's death, after 144 years of construction.
2. Nearly every city in France has a street named after Victor Hugo. France honours its most famous poet and writer, Victor Hugo, with a street named after him in nearly every city.
3. Denmark has 7,000 government-approved baby names (and 5 that are banned). You are allowed to name your child any one of 7,000 approved baby names in Denmark, but if you want something more unique, you will need to receive permission from the government to do so.
4. There is a rainforest in Europe. Europe's climate allows for rainforests; one of the last remaining is Peruvia in Bosnia and Herzegovina. The 3,500-acre forest is a reserve on UNESCO's World Heritage list.
5. Wales has a town with 57 Letters in its name. The longest name in any town in Europe belongs to Wales. The name means "cave" in Welsh. The name is - Llanfairpwllgwyngyllgogerychwyrdrwanwylltyllicgoch.
6. 10 villages in Scandinavia have the shortest city names — just one letter long. In Denmark, Sweden and Norway, 10 villages have names that are a single letter long.
7. It is illegal to have only one 'social pet' in Switzerland. The Swiss believe it is cruel for certain sociable pets to not have a companion. In order to keep guinea pigs, rabbits, parakeets and other pets deemed "social animals" content, you must have more than one.
8. The highest peak is found in Russia. The volcanic mountain peak of Mount Elbrus is not only Russia's tallest mountain, but Europe's, as well. Located in the Caucasus Mountains that separate Europe from Asia, it stands 18,510 feet in height.
9. European Russia makes up 70% of Russia. More than half of Russia's population is found in its European section, adding 110 million people to the continent's total population. This makes Russia the largest country in Europe in terms of population.
10. The Czech Republic has the most castles. If you were to visit a castle a day in the Czech Republic, it would take you nearly three years to see them all. With 932 castles, as well as 1,187 "stately homes," the Czechs have more castles than any other European nation.

Europe Facts!

1. Europe is the second smallest continent!
2. It has 1/4 of the world's population!
3. There are 44 European countries!
4. There are more than 200 languages spoken in Europe.
5. Russia is an Asian country in Europe.
6. Europe has lots of physical landmarks like:
 - North America
 - Black Sea
7. It has famous human landmarks like:
 - Eiffel tower
 - Stonehenge
 - St Basil's Cathedral
8. The Alps are the greatest mountain range in Europe going through 2 countries.
9. Each country has its own flag and capital city.
10. The smallest country in Europe is Vatican city.

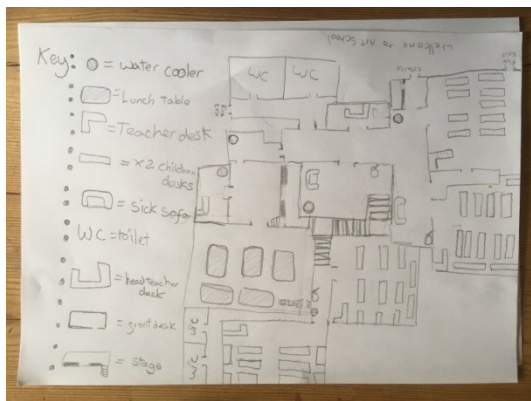


And a snail!

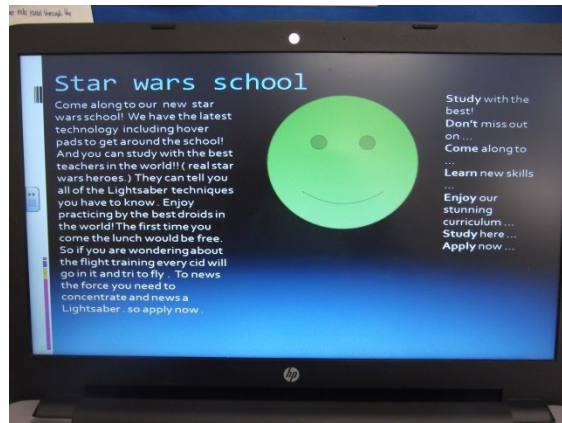
This Week's Home Learning in Year 5

This week we have...

- Done lots of excited writing based on wizards.
- Undertaken shapes work in maths.
- Researched the Galápagos Islands.
- Explored surrealism in art.
- Looked at structure and texture of pieces of music
- Explored growing up and growing old in science.
- Explored what life was like in Benin in history.



Asa's wizard school floor plan.



Carlo's brilliant wizard school writing.



Tom pretending to be a living statue, as part of our work on statues.

Please see below for recommendations of resources and tips to support parents during the current COVID-19 outbreak.

- CEOP is a well known and valuable child exploitation resource bank. Given current circumstances they are releasing a new activity pack every 2 weeks to support parents to deliver online safety activities with children at a time when they will be spending more time online at home.

<https://www.thinkuknow.co.uk/parents/Support-tools/home-activity-worksheets/>

- At present many parents will be juggling childcare with working from home. Top tips for parents working from home:

<https://www.barnardos.org.uk/blog/tips-parents-working-home-barnardos-colleagues>

- The NSPCC has created an information and advice resource for parents/carers of young people with anxiety about Coronavirus.

<https://www.nspcc.org.uk/keeping-children-safe/childrens-mental-health/depression-anxiety-mental-health>

- Professionals, parents and young people can be directed to the Young Addaction Pan Cheshire social media pages for daily updates, resources, tips and support

<https://www.facebook.com/Pan-Cheshire-Missing-and-Child-Exploitation-Service-1039465136264241>

<https://twitter.com/PanCheshireMFH>

The NSPCC has created an online Hub providing advice and support for parents and carers during the coronavirus outbreak. Content includes: information on keeping children safe from abuse; tips and advice to help parents working from home; and ways to talk to a child who is anxious or worried about coronavirus.

Visit the Hub: [Coronavirus \(COVID-19\) advice and support for parents and carers](#)

Mental Health Helpline - 0300 303 3972

Local NHS Trust, Cheshire and Wirral Partnership (CWP), has launched a new mental health helpline for residents of Cheshire West, Cheshire East and Wirral.

Open 24 hours a day, seven-days a week, it is open to people of all ages including children and young people who need urgent mental health support.

What to do if you need urgent mental health help:

- Please call **0300 303 3972** and our dedicated local NHS staff will support you to access the help you need;
- The helpline is open **24 hours a day, seven days a week** and is open to people of all ages – including children and young people;
- The helpline is now the **first port of call for mental health help** – it is operated by people in your local area who will know how best to support you. If you call NHS111 you may have to wait longer for help and will be re-directed to this local service – so call 0300 303 3972;
- Please note, A&E and 999 are **not the best places** to get help for the majority of mental health problems – **call 0300 303 3972** to be directed to the best local service to support you;
- You should still call 999 or go to A&E if you have an **immediate, life-threatening emergency** requiring mental or physical health assistance;

For non-urgent help and **general wellbeing advice**, the CWP website contains information and links to resources to support people with anxiety, low mood, and worries relating to the current Covid-19 pandemic www.cwp.nhs.uk

For **children and young people** there is also a dedicated website MyMind.org.uk

If you have something that you would like putting in our newsletter please email it either to *head@goostrey.cheshire.sch.uk* or *admin@goostrey.cheshire.sch.uk*

It needs to be with us by 12.00 on Thursday and attached to your email on a WORD document so once approved we can easily cut and paste. Thank you

We always welcome pieces about Goostrey pupils and their achievements outside of school. I love to hear what our pupils are celebrating and achieving outside school so we can celebrate in the newsletter and assembly.

The responsibility to get permission for other people's children to be on photographs lies with the sender not with the school.

**We will usually allow local events to be advertised in the newsletter, especially if we think they will be of interest to our pupils and their families.
However we do not endorse or take responsibility for anything not directly organised by the school.**

Useful contacts and numbers.....

If there's any other information that you feel should be added to this page, as a weekly standing item, please let me know.

www.goostreypreschool.org.uk

Telephone: 07471 756720 - available during pre-school hours only.

Watch this space for the new after school provider's details

Before School Club

If you would like to enrol your child for Goostrey Before School Club, please either download a booking form from our website www.goostrey.cheshire.sch.uk or collect from the reception desk. The cost is £3.00 per session and the club operates on each school day, from 8.00 AM to 8.55 AM. Please note no food is served at this club.

The Chair of Governors and the Head teacher meet at least once a week. If you have anything you would like them to discuss / consider please let us know. We will always respond to you.

The web address for ordering school uniform is:
www.myschoolstyle.com/school/goostrey

Class pages, on the school website have lots of up to date information for your child's class. Please keep looking at these as they are updated every week for you. Thank you

Compliments and Comments and Suggestions. Name:.....

Please use this slip if you wish to give school general feedback about any aspect of school life. It is not essential to provide your name but will be necessary if you want a response. Please return to Mrs Williams or the class teacher.

Alternatively you are always welcome to e mail staff or pop in to see them—school operates an open door policy.